

NOTES:

- 1 The system shall be anchored to concrete pad detailed in OPSD 923.001.
- 2 Removable 20mm dia anchor bolts, each with an ultimate pullout strength of 100kN in 30MPa concrete.
- A Delineation shall be according to OPSD 984.204.
- B The system depicted here is a proprietary product.
- C System configuration meets NCHRP Report 350 test level.
- D All dimensions are in millimetres unless otherwise shown.

SECTION A-A

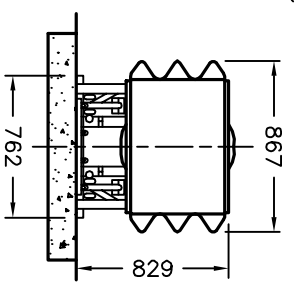


TABLE 1

SYSTEM CONFIGURATION	TL-2	TL-3
TYPE A CARTRIDGES FRONT REQ'D	1	3
TYPE B CARTRIDGES REAR REQ'D	3	5
SYSTEM LENGTH	3780	7250

ONTARIO PROVINCIAL STANDARD DRAWING

ENERGY ATTENUATOR, CRASH CUSHION

**TAU-II SYSTEM
INSTALLATION - PERMANENT
BIDIRECTIONAL**

Nov 2011 Rev 1



OPSD 923.383