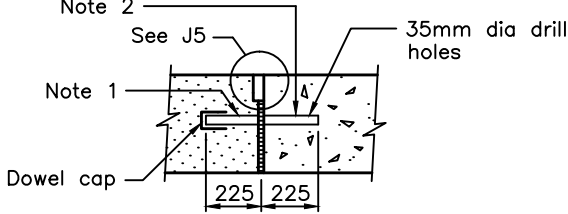
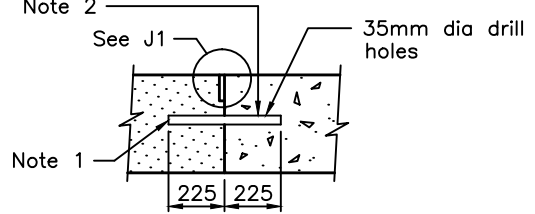


32mm dia x 450mm long epoxy coated smooth dowel bars grouted into holes with epoxy resin
Note 2

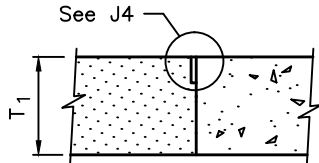


**SECTION A-A
EXPANSION JOINT**

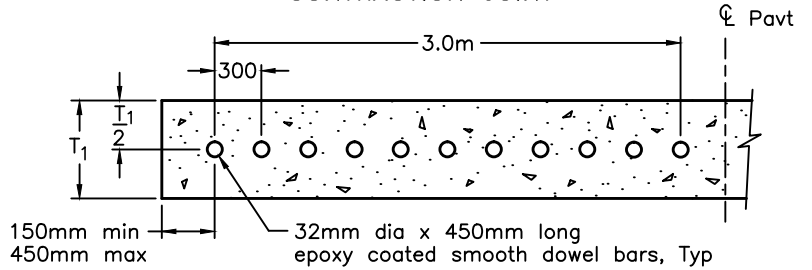
32mm dia x 450mm long epoxy coated smooth dowel bars grouted into holes with epoxy resin
Note 2



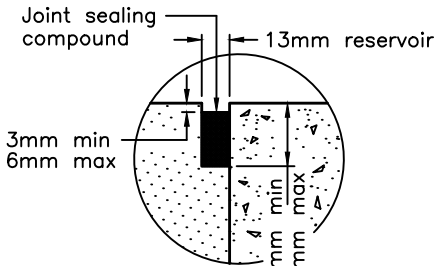
**SECTION B-B
CONTRACTION JOINT**



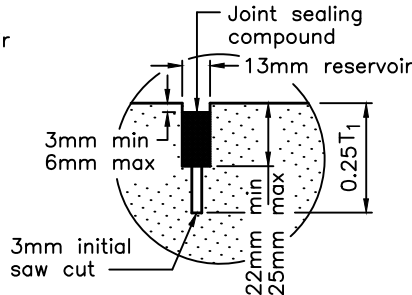
**SECTION C-C
LONGITUDINAL JOINT**



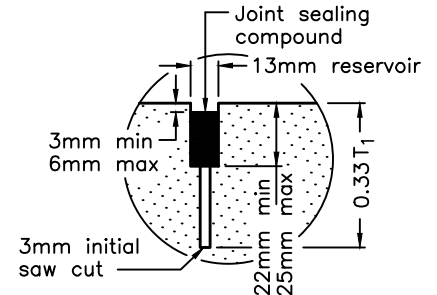
SECTION D-D



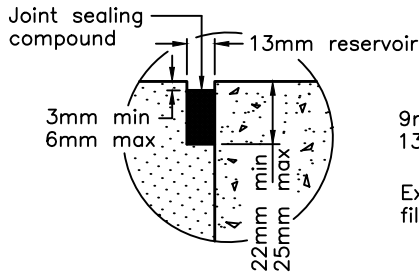
J1, CONTRACTION JOINT



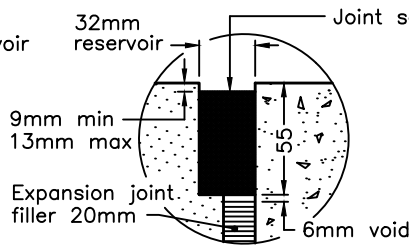
J2, CONTRACTION JOINT



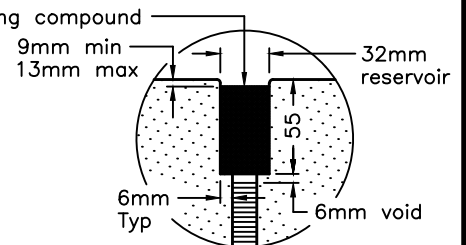
J3, LONGITUDINAL JOINT



J4, LONGITUDINAL JOINT



J5, EXPANSION JOINT



J6, EXPANSION JOINT

NOTES:

- 1 The free end of dowel bars shall be coated with an approved bond breaking material immediately prior to placing concrete.
- 2 The epoxy resin shall envelop the bar within the drill hole and shall be set prior to placing the concrete.
- A Waxed building paper or equivalent bond breaker required at all joints.
- B This standard to be read in conjunction with OPSD 560.010.
- C Grout retention disks shall be used on all bars.
- D All dimensions are in millimetres unless otherwise shown.

LEGEND:

- New concrete
- T_1 = Thickness of concrete

ONTARIO PROVINCIAL STANDARD DRAWING

Nov 2018

Rev 3

**EXPOSED CONCRETE PAVEMENT
FULL DEPTH CONCRETE SLAB REPAIR
JOINT DETAILS**



OPSD 560.020