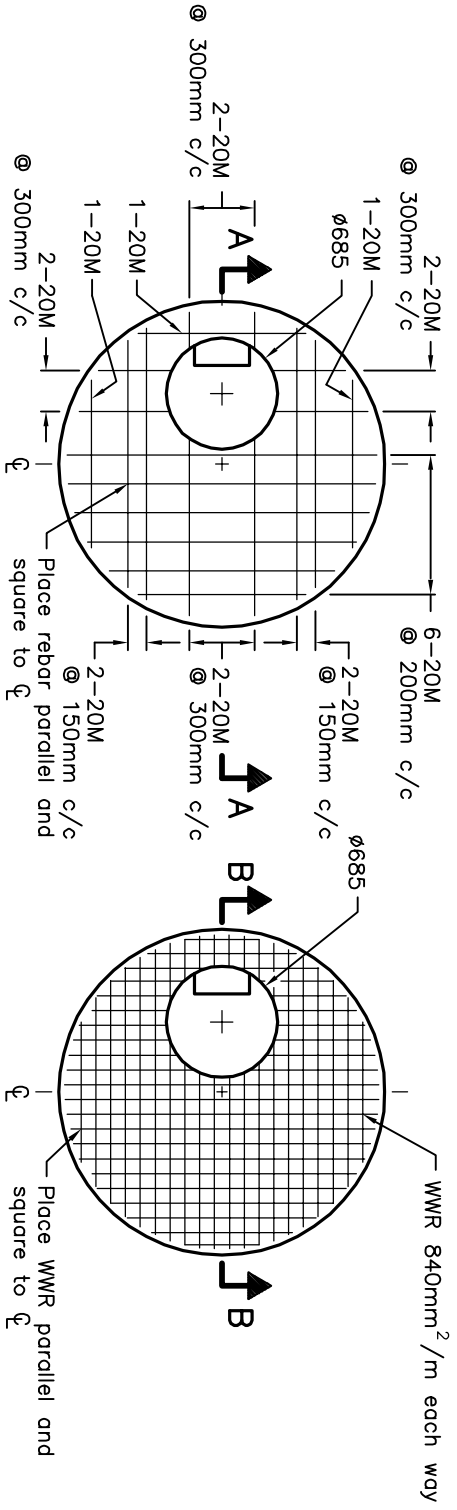


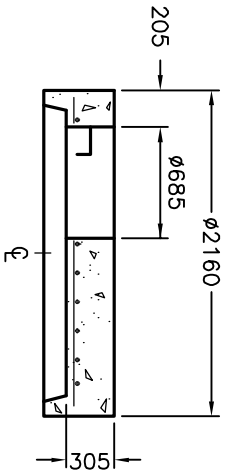
**1800mm DIAMETER
MAINTENANCE HOLE**

Precast units,
OPSD 701.051

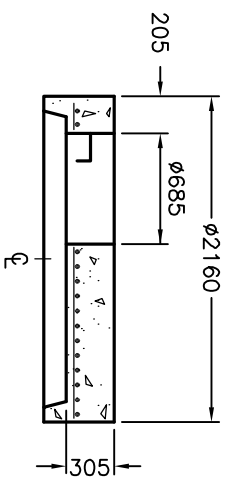


**PLAN OF FLAT CAP
WITH REINFORCING STEEL BARS**

**PLAN OF FLAT CAP
WITH WWR**



SECTION A-A



SECTION B-B

- NOTES:**
- A All reinforcing steel shall have 25mm minimum cover.
 - B All dimensions are nominal.
 - C All dimensions are in millimetres unless otherwise shown.

ONTARIO PROVINCIAL STANDARD DRAWING		Nov 2014	Rev	2
<p align="center">PRECAST CONCRETE SINGLE INLET FLAT CAP</p> <p align="center">1800mm DIAMETER</p>				
		<p align="center">OPSD 703.012</p>		