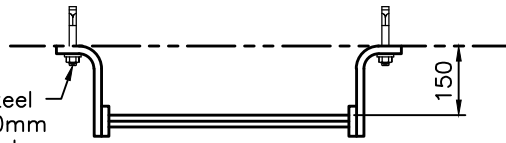
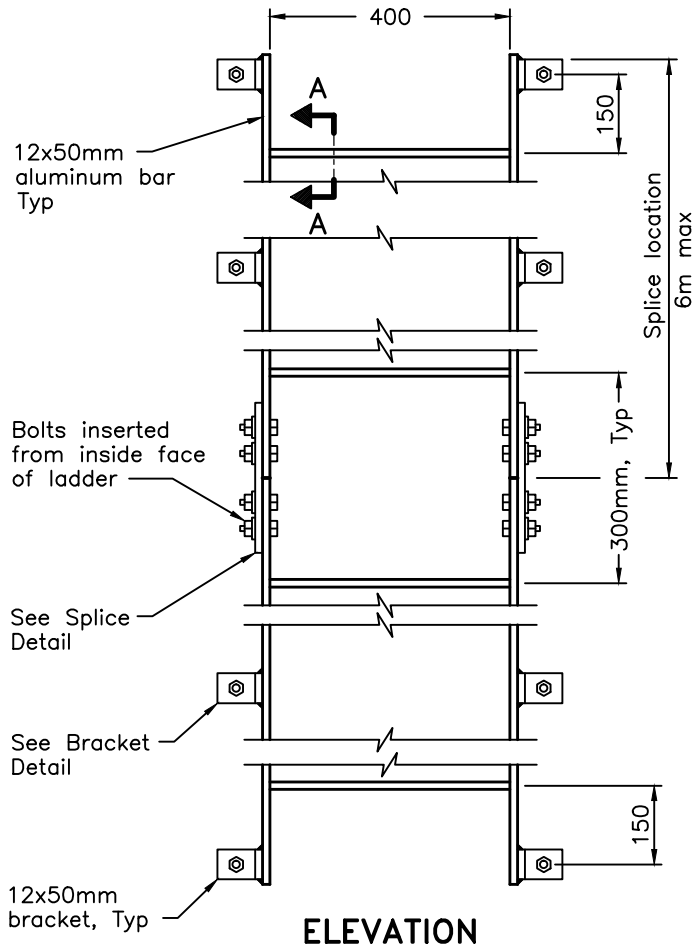


Type 304 stainless steel wedge anchor 16x150mm with nut and lock washer Typ

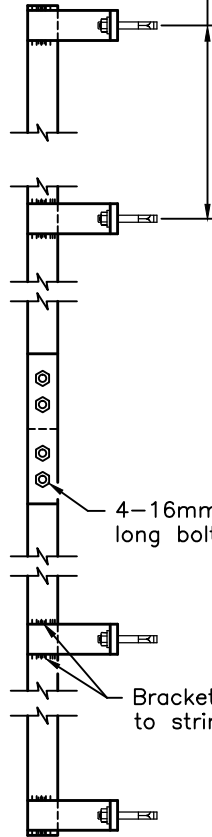


**PLAN**

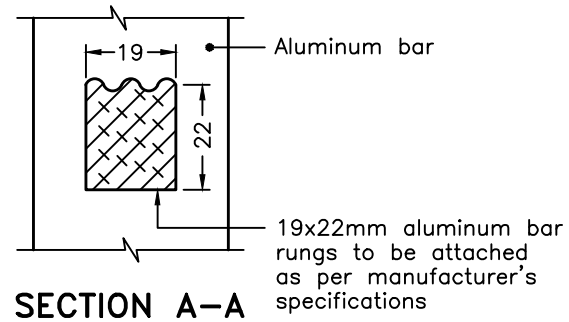


**ELEVATION**

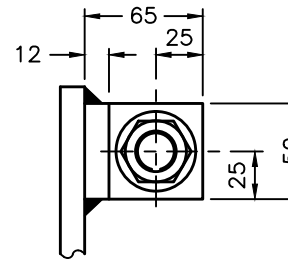
Spacing between brackets 1.5m max Typ



**SIDE VIEW**

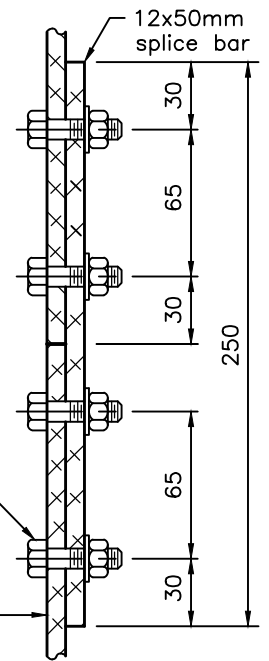


**SECTION A-A**



**BRACKET DETAIL**

Type 304 stainless steel hex bolt 16x40mm with nut and lock washer, Typ



**SECTION THROUGH SPLICE DETAIL**

**NOTES:**

- A All aluminum in contact with concrete shall be thoroughly coated with asphalt paint.
- B All bolts, nuts, and washers shall be made of Type 304 stainless steel.
- C All welding shall be according to CSA W47.2 and W59.2.
- D All brackets, bars, rungs, and stringers shall be fabricated from 6000 series structural aluminum.
- E All dimensions are in millimetres unless otherwise shown.

ONTARIO PROVINCIAL STANDARD DRAWING

Nov 2018 Rev 3

**ALUMINUM LADDER**  
FOR MAINTENANCE HOLES



**OPSD 406.010**