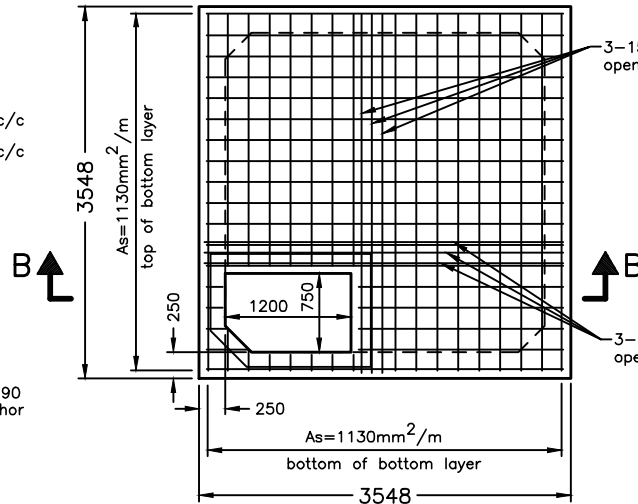
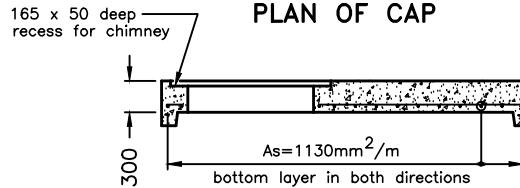


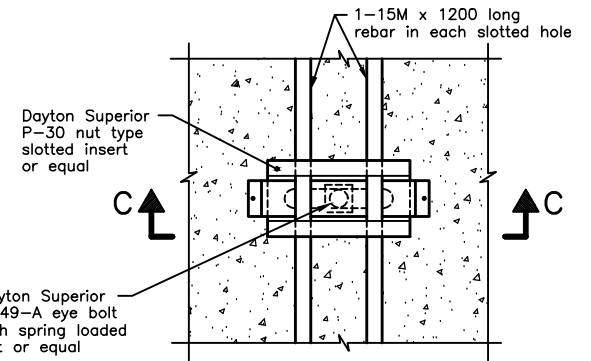
SECTION A-A



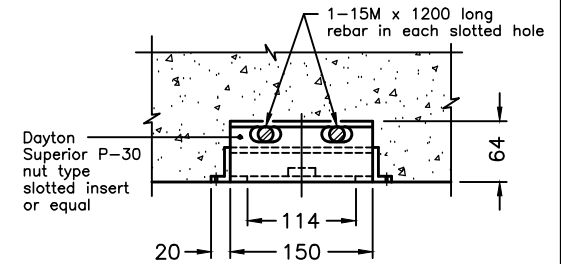
PLAN OF CAP



SECTION B-B



PLAN



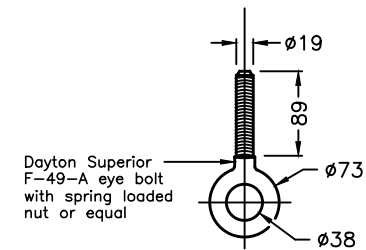
SECTION C-C

NOTES:

- 1 Equipment lifting system shall be installed on underside of precast concrete cap, when required.
- A Precast concrete strength shall be 40MPa.
- B Reinforcing steel shall be according to CSA G30.18, Grade 400W. Inside diameter of bends shall equal six bar diameters. Additional reinforcing shall be rebar Grade 400W.
- C Main reinforcing shall be welded wire fabric, $f_y=500\text{Mpa}$, according to ASTM A497M. Minimum bend shall be six bar or four wire diameters.
- D Clear cover to reinforcing steel in precast shall be a minimum of 40mm and a maximum of 50mm.
- E This OPSD shall be read in conjunction with OPSD 1101.030, 1101.031, and 1101.032.
- F All dimensions are nominal.
- G All dimensions are in millimetres unless otherwise shown.

LEGEND:

As means Area of Steel



EQUIPMENT LIFTING SYSTEM

ONTARIO PROVINCIAL STANDARD DRAWING

PRECAST CONCRETE VALVE CHAMBER
WITH POURED-IN-PLACE THRUST BLOCKS
3000 x 3000mm
CHIMNEY AND CAP

Nov 2018

Rev 1



OPSD 1101.033