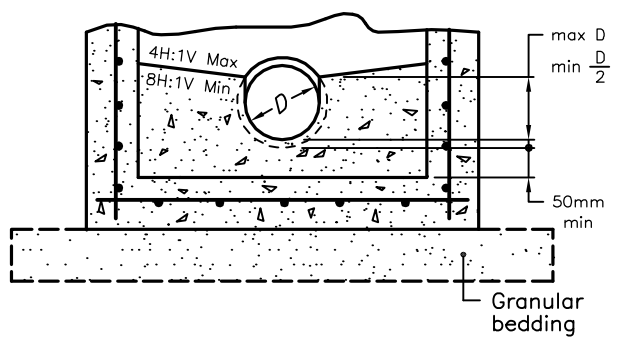
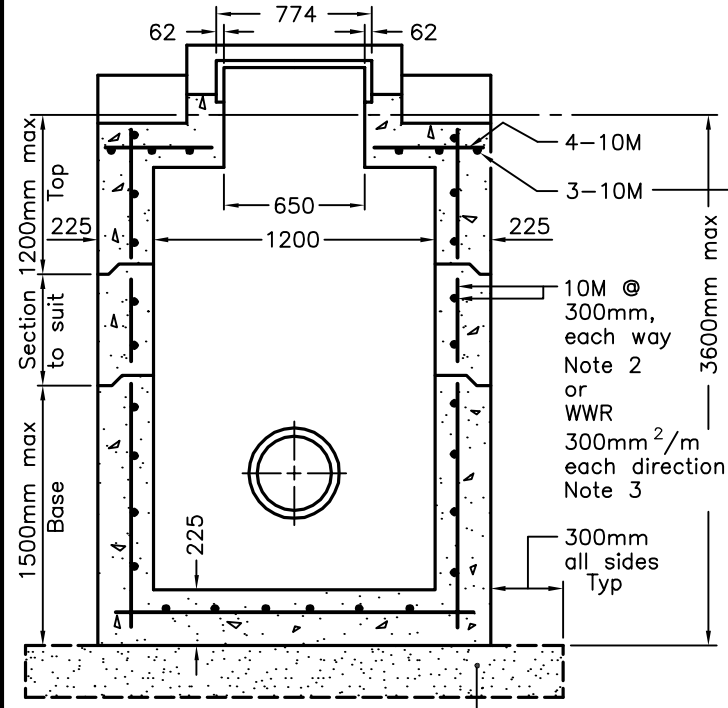


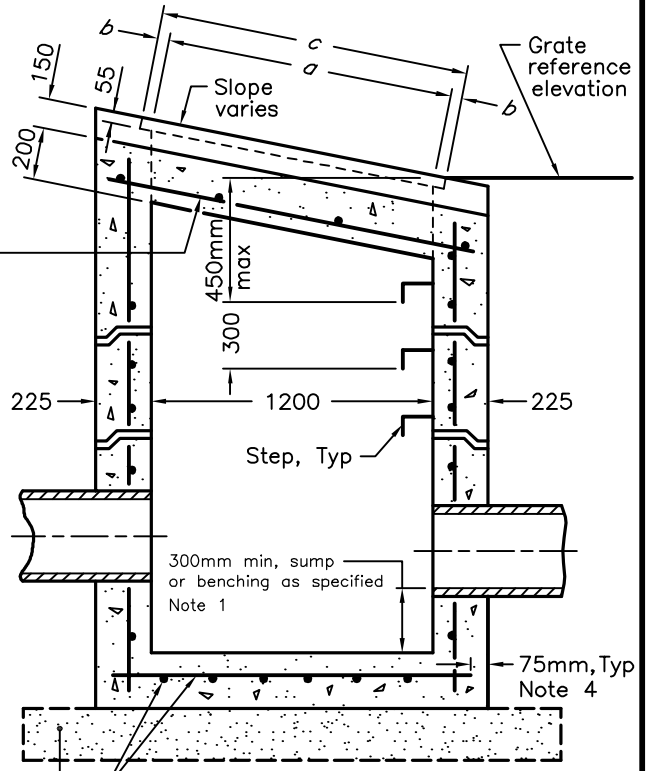
**PLAN**



**BENCHING DETAIL**



**SECTION A-A**



**SECTION B-B**

**NOTES:**

- 1 The sump is measured from the lowest invert. Benching as shown in Benching Detail.
- 2 Lap horizontal 10M rebar 300mm. Laps shall be placed at corners.
- 3 Lap horizontal wires 300mm or weld. Welds to develop 75% of yield strength of wire. Laps or welds shall be placed at corners.
- 4 End rebar or WWR in base 75mm from outside face of wall.
- A Where inlet is placed across ditch and is accessible to vehicular traffic, grating slope shall be 6H:1V or flatter.
- B Granular backfill shall be placed a minimum thickness of 300mm all around the ditch inlet maintenance hole.
- C Concrete for benching shall be 30MPa.
- D Benching slope and height shall be as specified.
- E Grating shall be according to OPSD 403.010.
- F Steps shall be according to OPSD 405.010 or 405.020.
- G Maximum pipe size: straight through-1200mm dia; right angle pipes - 700mm diameter.
- H Pipe support shall be according to OPSD 708.020.
- I Centre reinforcing in walls  $\pm 35$ mm. All other reinforcing shall have a minimum cover of 25mm.
- J All dimensions are nominal.
- K All dimensions are in millimetres unless otherwise shown.

Opening Dimensions				
Grate		a	b	c
Type	Slope			
C	2H:1V	1341	66	1473
	3H:1V	1265	104	1473
	4H:1V	1237	118	1473
B	6H:1V	1216	65	1346
	8H:1V	1210	68	1346
	10H:1V	1206	70	1346
	HOR	1200	73	1346

<b>ONTARIO PROVINCIAL STANDARD DRAWING</b>	Nov 2014	Rev 3	
<b>PRECAST CONCRETE</b>			
<b>DITCH INLET MAINTENANCE HOLE – TYPE B</b>			
1200 x 1200mm			<b>OPSD 702.050</b>