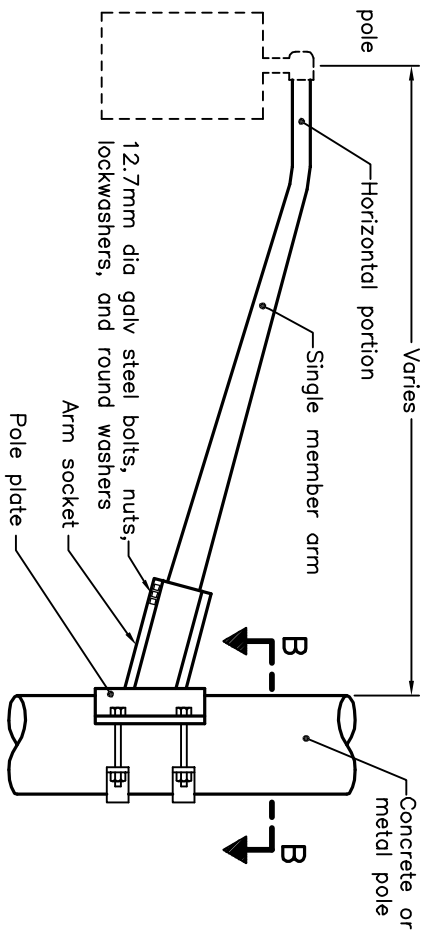
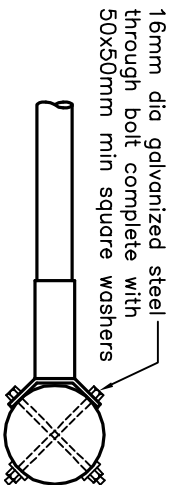


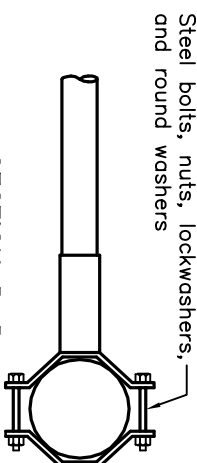
GENERAL ARRANGEMENT



GENERAL ARRANGEMENT



SECTION A-A



SECTION B-B

**WOODEN POLE ATTACHMENT**

NOTE 1

**CONCRETE AND METAL POLE ATTACHMENT**

NOTE 2

**NOTES:**

- 1 For 1.2 to 2.4m arms, use 3.2mm thick arm sockets and 6.3mm thick pole plates. For 3.0 to 6.7m arms, use 4.7mm thick arm sockets and 9.5mm thick pole plates.
  - 2 For 1.2 to 2.4m arms, use 3.2mm thick arm sockets, 6.3mm thick pole plates, and 15mm dia bolts. For 3.0 to 6.7m arms, use 4.7mm thick arm sockets, 9.5mm thick pole plates, and 19mm dia bolts.
- A For pole attachment locations refer to OPSPD 2501.010.
- B Traffic signal hanger details as specified.
- C All dimensions are in millimetres unless otherwise shown.

ONTARIO PROVINCIAL STANDARD DRAWING

Nov 2017

Rev 0

**ALUMINUM SINGLE MEMBER ARM ATTACHMENT DETAILS**

OPSPD 2501.020

