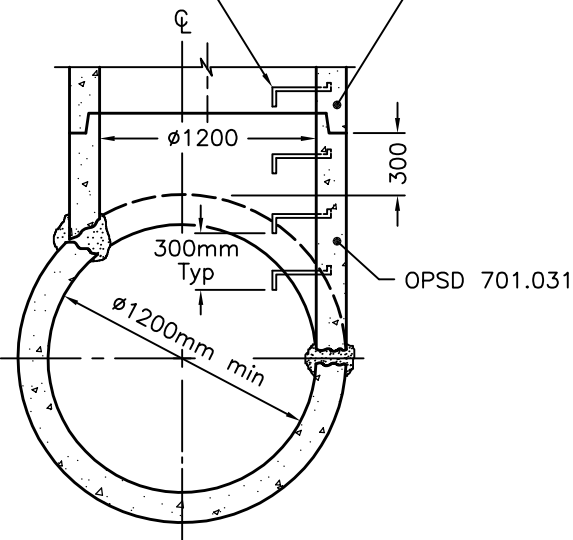


**PLAN**

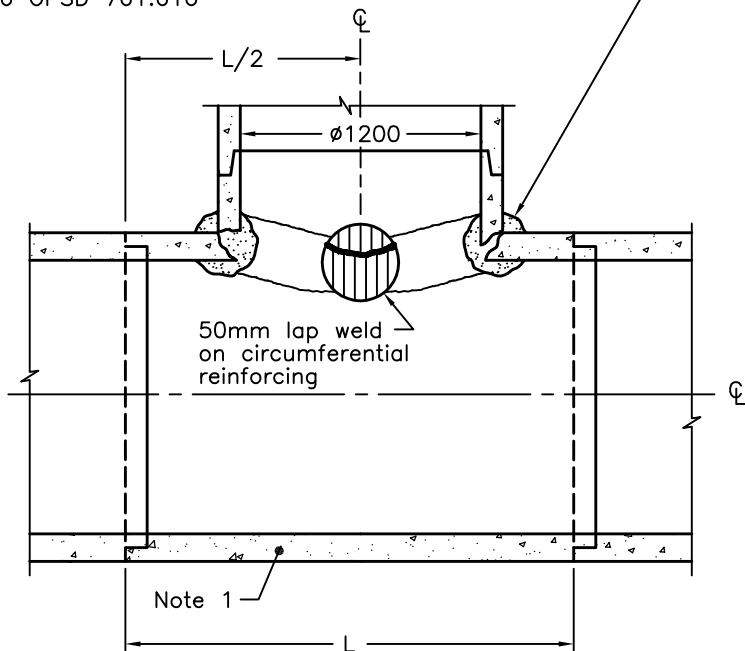
Reinforcing 50mm min lap weld and connection grouted with non-shrink mortar, minimum 40 MPa, all around connection

Steps according to OPSD 405.010 or 405.020

Balance of maintenance hole according to OPSD 701.010



**SECTION A-A**



**SECTION B-B**

**NOTES:**

- 1 Sewer pipe shall be according to CAN/CSA A257.2, class to match that of the higher class adjacent pipe.
- A Bedding for MH tee to match pipe bedding either side of tee.
- B Granular backfill shall be placed to a minimum thickness of 300mm all around the maintenance hole tee.
- C Minimum steel in connection shall equal area of steel in pipe.
- D Structures exceeding 5.0m in depth shall include safety platform according to OPSD 404.020.
- E All dimensions are nominal.
- F All dimensions are in millimetres unless otherwise shown.

**LEGEND:**

L = Standard length of pipe (2440mm minimum)

ONTARIO PROVINCIAL STANDARD DRAWING

Nov 2019 Rev 4

**PRECAST CONCRETE MAINTENANCE  
HOLE MANUFACTURED TEE**



**OPSD 707.010**