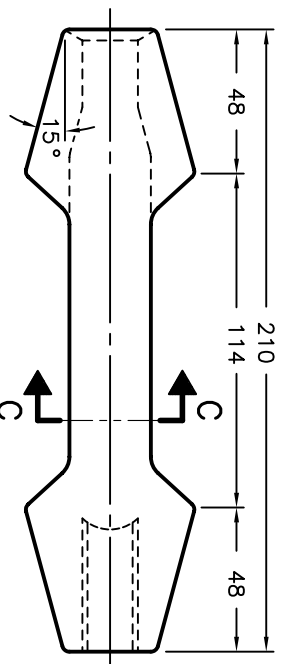
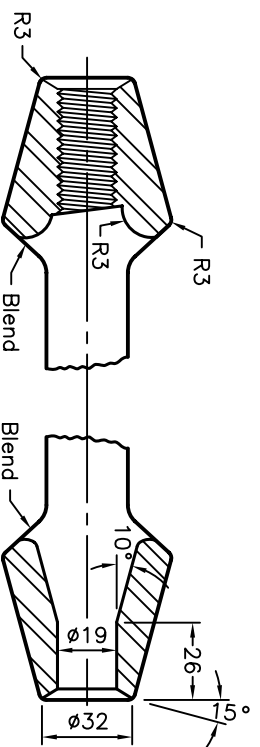


TURN BUCKLE ASSEMBLY - TOP VIEW

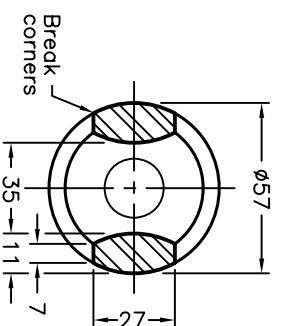


END FITTING - SIDE VIEW

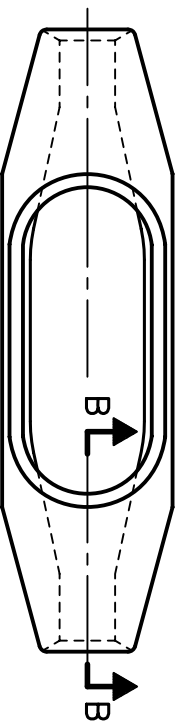


SECTION A-A

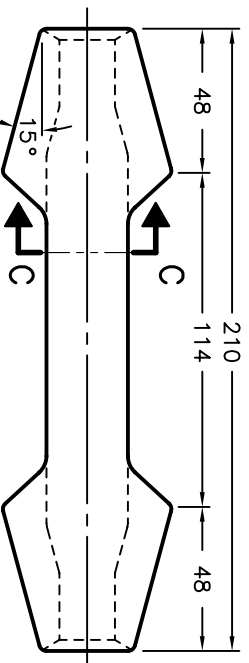
SECTION B-B



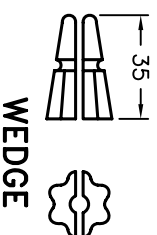
SECTION C-C



SPLICER - TOP VIEW



SPLICER - SIDE VIEW

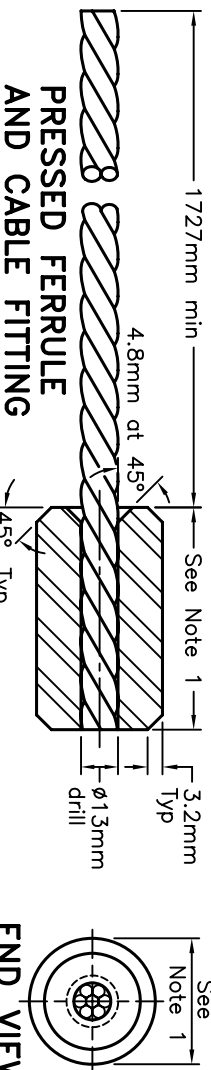


WEDGE

**NOTES:**

- 1 Uncompressed ferrule: length 90mm, diameter 30mm.  
Compressed ferrule: length 100mm min, diameter 25mm min.
- 2 As an option, a square or hex nut may be welded to a 3/4"-10UNC-2A threaded bar.

- A Dimensions of ferrous castings to have tolerance of  $\pm 0.7$ mm.
- B All dimensions are in millimetres unless otherwise shown.



PRESSED FERRULE AND CABLE FITTING

END VIEW

ONTARIO PROVINCIAL STANDARD DRAWING

Nov 2008

Rev 1

GUIDE RAIL SYSTEM, CABLE

COMPONENT - CABLE FITTINGS

OPSD 913.101

