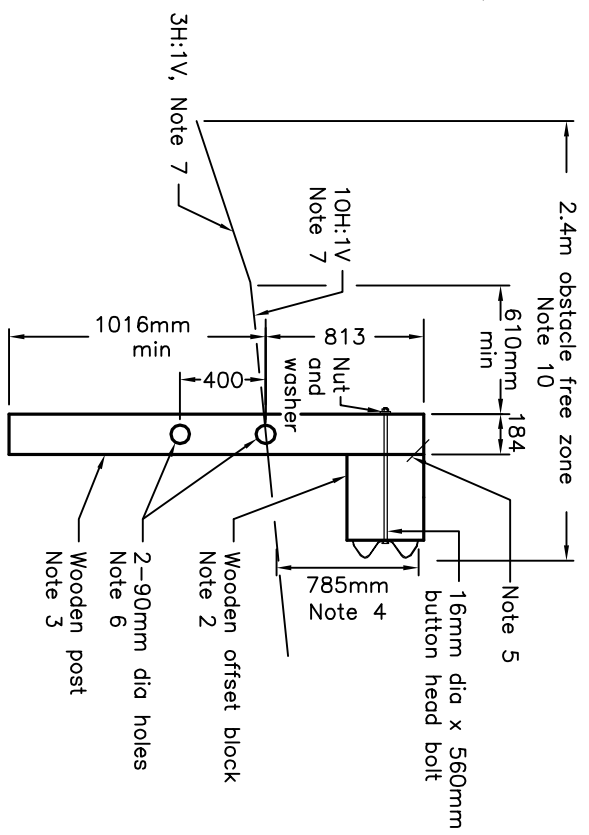


**Outside of rectangular culvert
ELEVATION**

NOTES:

- 1 Type M rail, mounting hardware, and splice hardware shall be according to OPSD 912.125.
 - 2 Wooden offset block dressed dimensions shall be 140mm wide x 360mm long x 305mm deep.
 - 3 Wooden posts dressed dimensions shall be 140mm wide x 1829mm long x 184mm deep.
 - 4 Mounting height to top of steel beam rail shall be measured vertically at face of rail.
 - 5 Drive 16D double head nail through post and offset block.
 - 6 The centre of the top hole shall be in line with the ground surface.
 - 7 Slope shall be flatter when specified.
 - 8 Type M SBGR includes Type M20 and Type M30. The minimum length of Type M SBGR to be installed upstream and downstream of the long span treatment shall be 19.05m.
 - 9 Distance from face of rail to inside face of culvert headwall shall not be less than 900mm.
 - 10 Obstacles shall not protrude more than 50mm above the finished grade.
- A** System configuration meets AASHTO MASH TL-3.
- B** All dimensions are in millimetres unless otherwise shown.



POSTS ① TO ⑥

ONTARIO PROVINCIAL STANDARD DRAWING		Nov 2016	Rev 0
GUIDE RAIL SYSTEM, STEEL BEAM TYPE M – 5.715m LONG SPAN TREATMENT INSTALLATION			
OPSD 912.246			