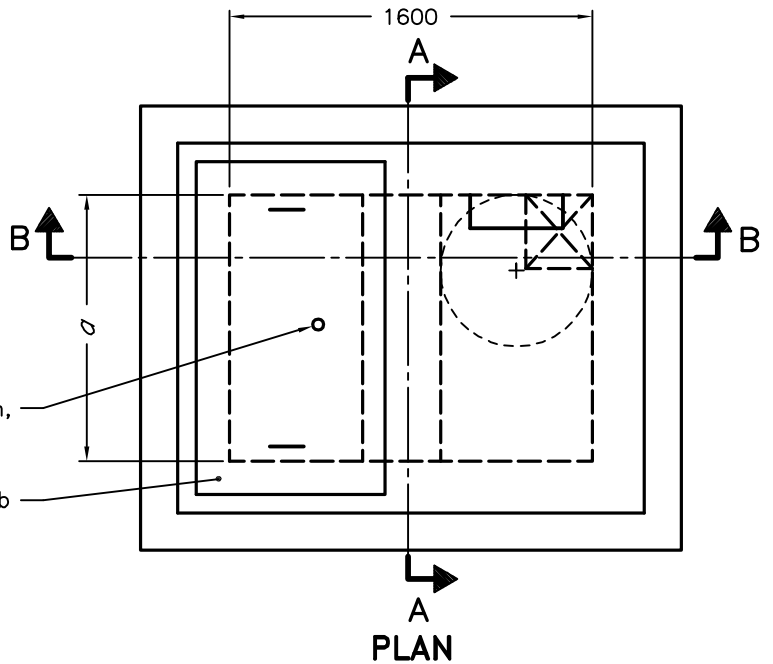


	100 to 250mm WATERMAIN	300 to 350mm WATERMAIN
σ	1100	1300



Valve box for valve extension,
align with valve operator
OPSD 1101.020

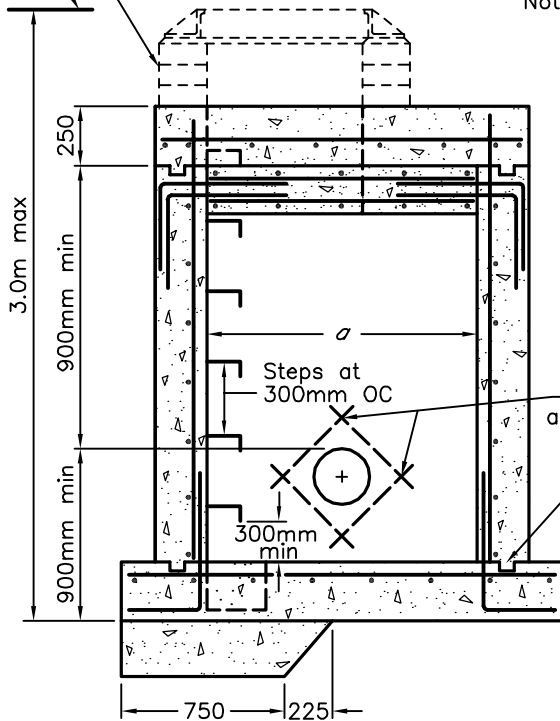
Removable slab

Grate reference elevation

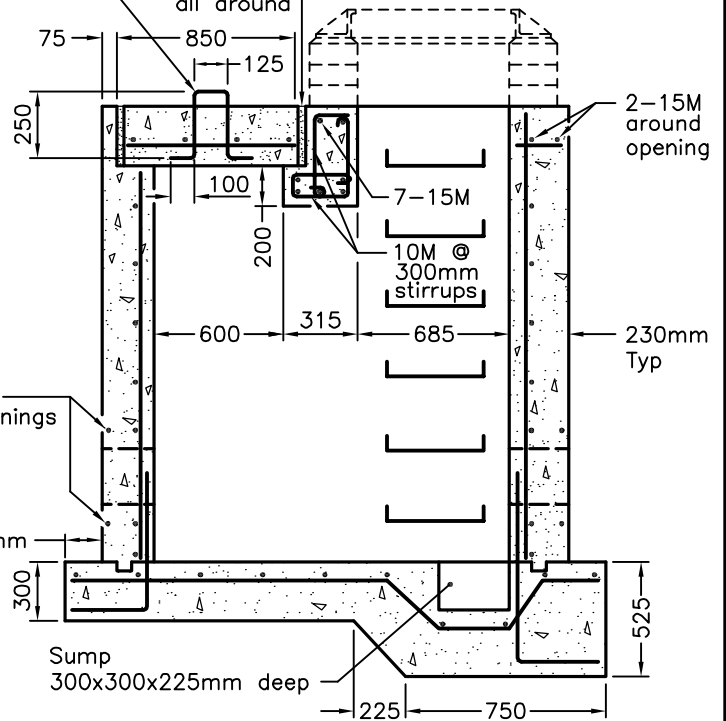
For adjustment unit and frame
installation, OPSD 704.010

Lifting rings 2-20M
Note 1

Caulking
all around



SECTION A-A



SECTION B-B

NOTES:

1 Exposed portion of lift rings shall be coated with heavy asphalt paint prior to backfilling operations.

A Reinforcement shall have 50mm minimum cover.

B All steel reinforcement shall be 15M at 300mm unless otherwise shown.

C This OPSD shall be read in conjunction with OPSD 1100.011.

D Joint around removable slab shall be sealed as specified.

E All dimensions are in millimetres unless otherwise shown.

ONTARIO PROVINCIAL STANDARD DRAWING

Nov 2014 Rev 3

CAST-IN-PLACE CHAMBER
FOR VALVES UP TO
350mm DIAMETER



OPSD 1100.010