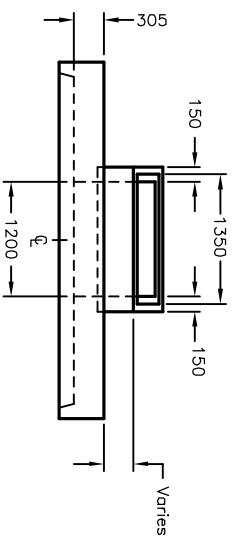


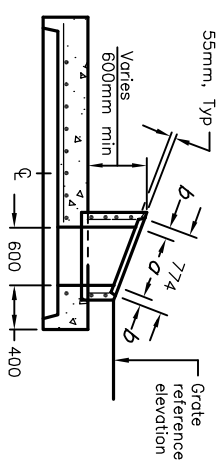
**TYPE A  
DITCH INLET**

**PLAN OF FLAT CAP  
WITH REINFORCING STEEL BARS**

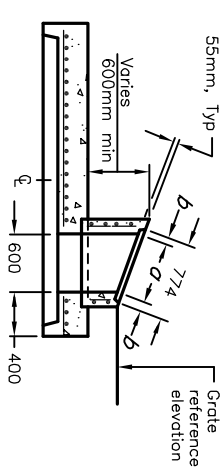
**PLAN OF FLAT CAP  
WITH WWR**



**FRONT VIEW**



**SECTION A-A**



**SECTION B-B**

**NOTES:**

- A Where inlet is placed across ditch and is accessible to vehicular traffic, grating slope shall be 6H:1V or flatter.
- B All reinforcing steel shall have 25mm minimum cover.
- C Grating shall be according to OPSD 403.010.
- D All dimensions are in millimetres unless otherwise shown.

Opening Dimensions		
Grate Type	Slope	
B	2H:1V	670
	3H:1V	632
	4H:1V	618
Horizontal		600

**ONTARIO PROVINCIAL STANDARD DRAWING**  
**PRECAST CONCRETE DITCH INLET - TYPE A**  
**WITH 2400mm DIAMETER FLAT CAP**

Nov 2014 Rev 3



**OPSD 706.030**