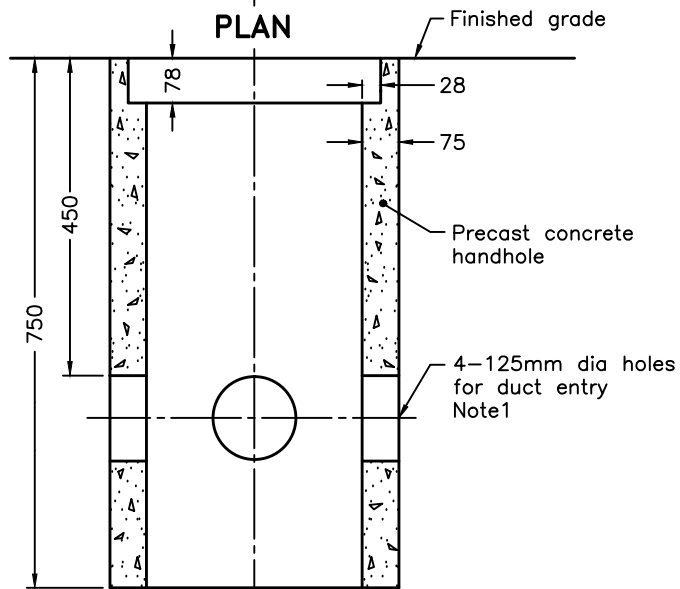
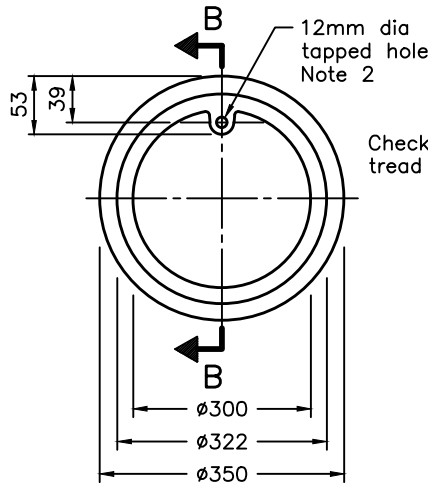


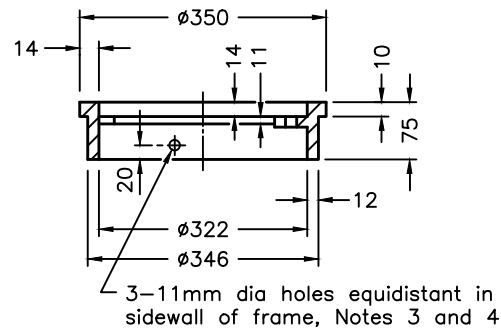
PLAN



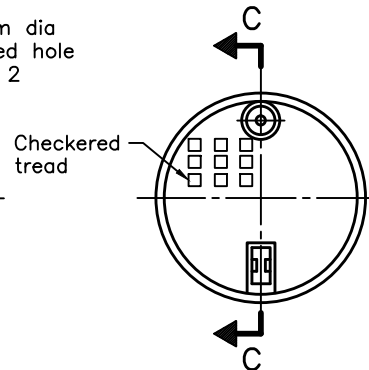
SECTION A-A



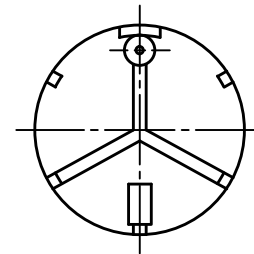
PLAN FRAME



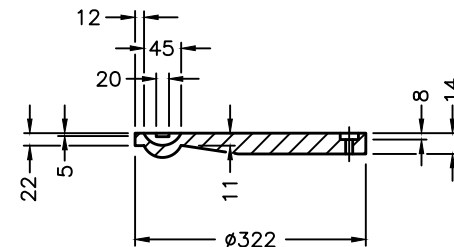
SECTION B-B



PLAN COVER



UNDERSIDE OF COVER



SECTION C-C

NOTES:

- 1 For installation of ducts see OPSD 2123.030.
 - 2 Cover shall be retained with 12mm dia x 20mm long stainless steel hex head machine bolt that shall be flush with top of cover when fastened.
 - 3 Frame shall be attached using 3-10mm dia x 38mm long machine bolts anchored in concrete wall.
 - 4 One ground lug for #6 AWG stranded copper shall be attached to one frame bolt.
- A For general installation see OPSD 2117.020.
- B All dimensions are in millimetres unless otherwise shown.

ONTARIO PROVINCIAL STANDARD DRAWING

Nov 2017 Rev 0

ELECTRICAL HANDHOLE
 PRECAST CONCRETE WITH COVER
 300mm DIAMETER



OPSD 2112.010