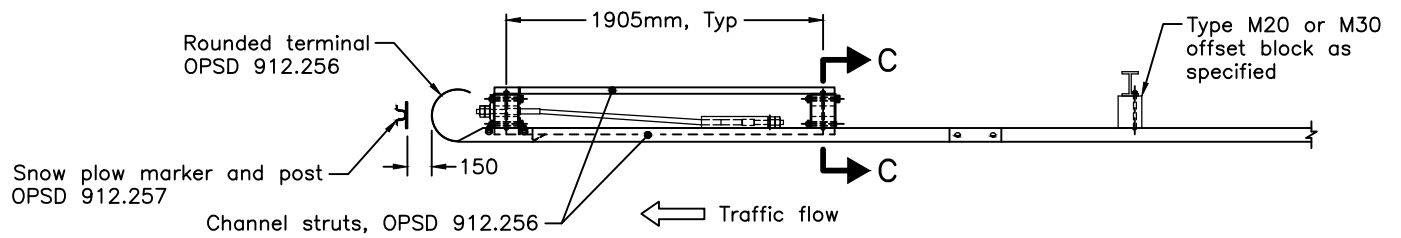
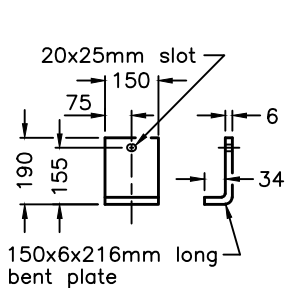


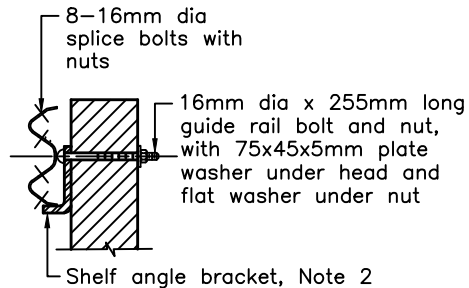
SECTION A-A



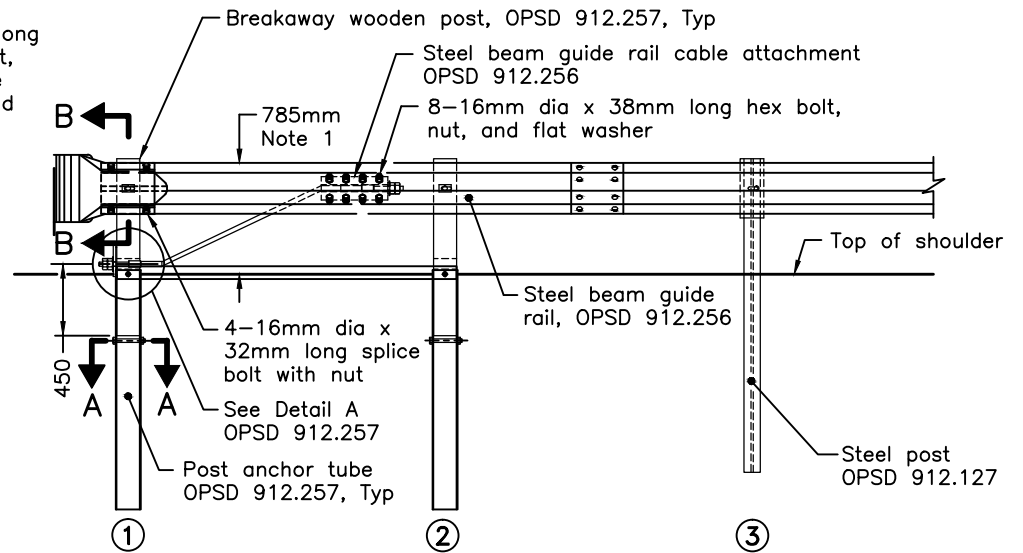
PLAN



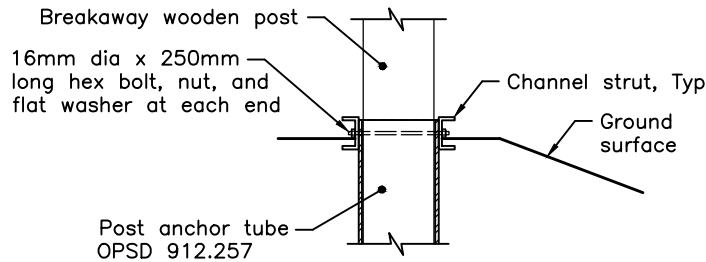
**SHELF ANGLE BRACKET
DETAIL**



SECTION B-B



ELEVATION



SECTION C-C

NOTES:

- 1 Mounting height to top of steel beam shall be measured vertically at face of rail.
 - 2 Rail is not bolted to post ① and is supported by shelf angle bracket that is bolted to post ①.
- A Splice and mounting hardware shall be according to OPSD 912.125.
- B This OPSD shall be read in conjunction with OPSD 912.256 and 912.257.
- C All dimensions subject to manufacturing tolerances unless otherwise shown.
- D System configuration meets AASHTO MASH TL-3.
- E All dimensions are in millimetres unless otherwise shown.

ONTARIO PROVINCIAL STANDARD DRAWING

Nov 2018 Rev 1

GUIDE RAIL SYSTEM, STEEL BEAM
TYPE M20 AND M30 LEAVING END
TREATMENT INSTALLATION



OPSD 912.255