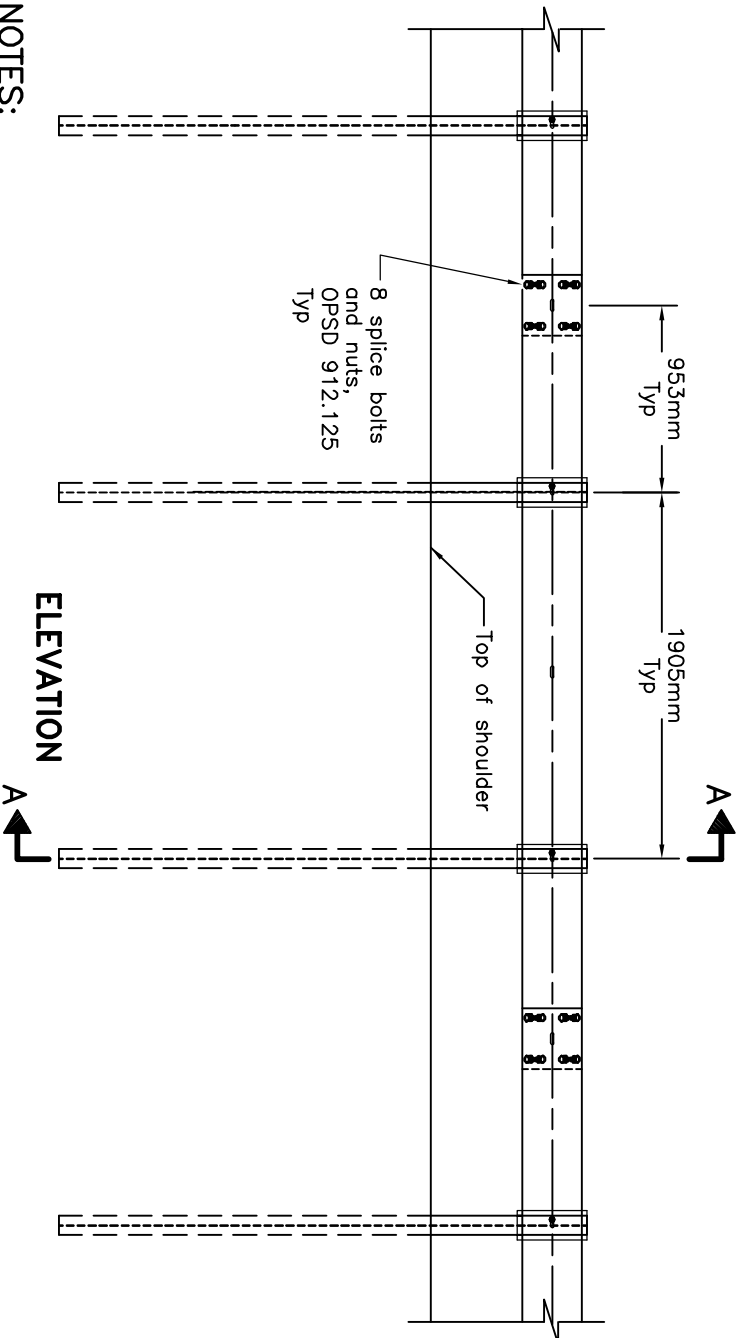


Type M rail, OPSD 912.125 Typ

2438mm long Type M20 steel post with offset block, OPSD 912.127 Typ

PLAN



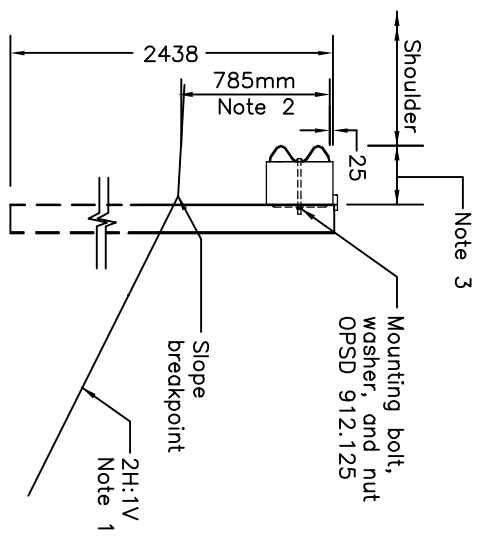
953mm Typ

1905mm Typ

8 splice bolts and nuts, OPSD 912.125 Typ

Top of shoulder

ELEVATION



SECTION A-A

NOTES:

- 1 Slope shall be flatter when specified.
- 2 Mounting height to top of steel beam rail shall be measured vertically at face of rail.
- 3 Offset from edge of shoulder to traffic side face of post shall be 280mm.

- A System configuration meets AASHTO MASH TL-3.
- B All dimensions are in millimetres unless otherwise shown.

ONTARIO PROVINCIAL STANDARD DRAWING

GUIDE RAIL SYSTEM, STEEL BEAM TYPE M20 – ADJACENT TO 2H:1V SLOPE INSTALLATION – RAIL AT SHOULDER

Nov 2016 Rev 0



OPSD 912.186