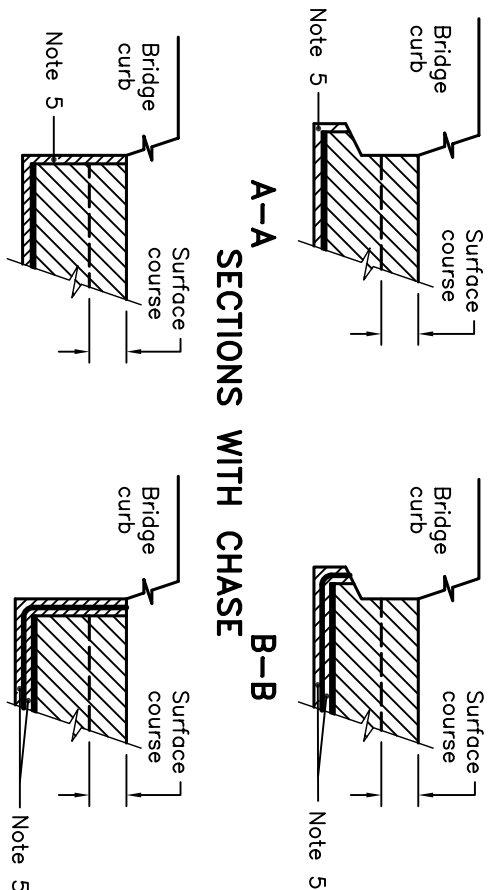
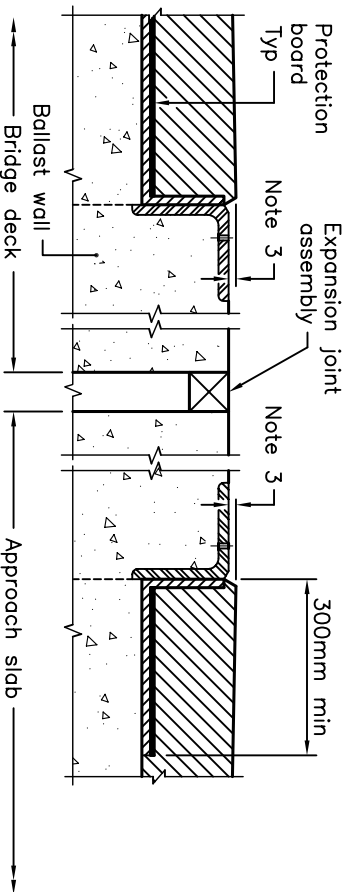
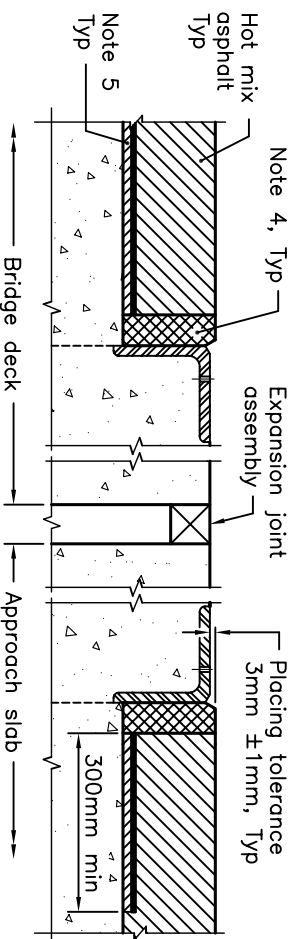


**SECTION AT JOINTS EXCEPT AT EXPANSION JOINT ASSEMBLIES**



**SECTIONS WITHOUT CHASE**



**SECTION AT EXPANSION JOINT ASSEMBLY INSTALLED BEFORE PAVING**

**SECTION AT EXPANSION JOINT ASSEMBLY INSTALLED AFTER PAVING**

**NOTES:**

- 1 Existing joint filler to be removed as shown. Depth may vary when removing a neoprene joint filler at expansion joint.
- 2 Saw cut groove in pavement to be centred over joint and filled with hot-poured rubberized asphalt joint sealing compound.
- 3 5mm ±1mm thickness of asphalt to be tapered to zero in a distance not less than 1.0m from concrete dams.
- 4 20mm wide full depth saw cut groove in hot mix asphalt to be filled with hot-poured rubberized asphalt joint sealing compound.
- 5 5mm ±1mm hot applied asphalt membrane.

- A Joint filler Type A as specified.  
 B All dimensions are in millimetres unless otherwise shown.

ONTARIO PROVINCIAL STANDARD DRAWING		Nov 2008	Rev 2
<b>DECK, WATERPROOFING HOT APPLIED ASPHALT MEMBRANE WITH PROTECTION BOARD</b>			
		<b>OPSD 3370.100</b>	

