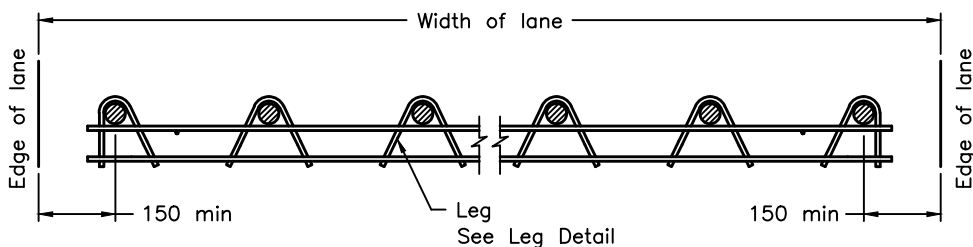
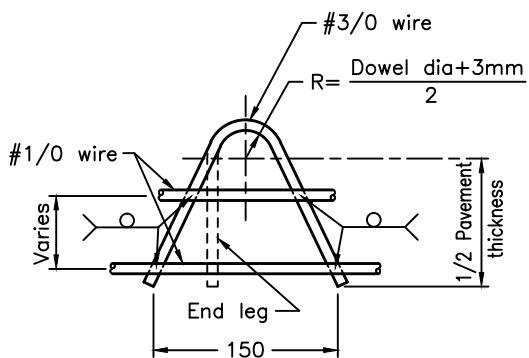


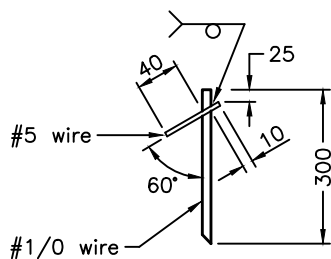
SECTION A-A



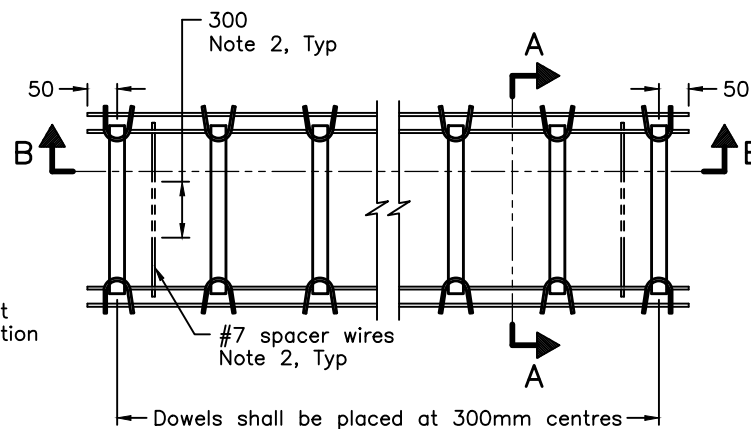
SECTION B-B



LEG DETAIL



STAKE DETAIL



PLAN

NOTES:

- 1 A minimum of 3 stakes shall be uniformly spaced per side per lane.
 - 2 Spacer wire shall be cut in two places and the mid section removed after staking assembly is in position. Section removed shall be a minimum length of 300mm.
 - 3 Arc or resistance spot weld, alternate ends of adjacent dowels only, top or bottom of dowel bar.
- A At bridge approaches the load transfer device shall match the skew of the approach slab.
- B Load transfer device shall be shop coated with RC-250, Tectyl 506, or Protect 6116-DS Amber.
- C Load transfer devices not required in shoulders or gore areas.
- D All dimensions are in millimetres unless otherwise shown.

ONTARIO PROVINCIAL STANDARD DRAWING

Nov 2017 Rev 3

LOAD TRANSFER DEVICE
RIGHT ANGLE CONTRACTION JOINT
 CONCRETE OR COMPOSITE PAVEMENT



OPSD 552.051