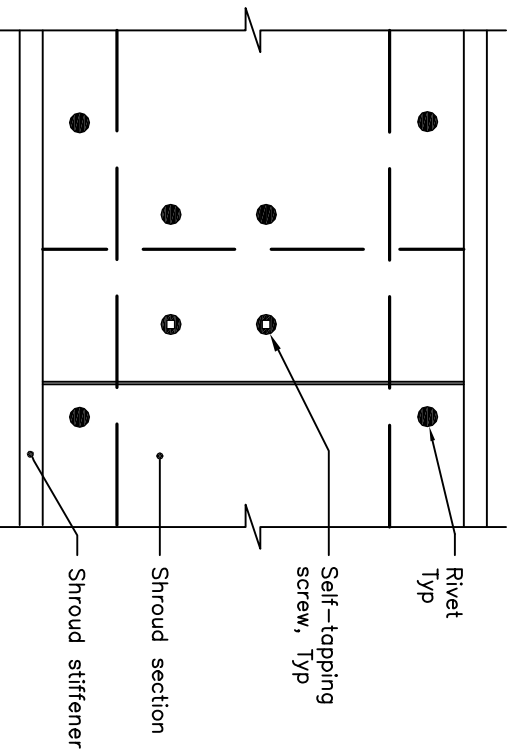
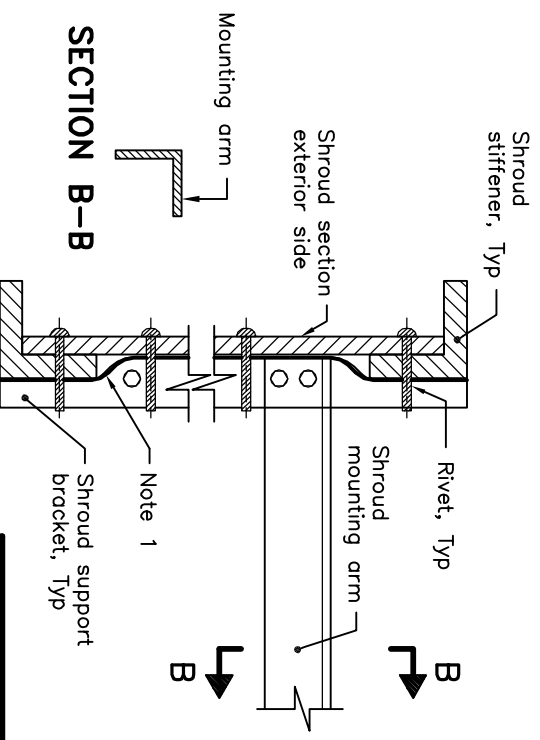


ATTACHMENT OF SHROUD MOUNTING ARM TO SHROUD SUPPORT BRACKET



- NOTES:**
- 1 Bend shroud support bracket at top and bottom shroud stiffener.
 - A Length of shroud support bracket to suit shroud assembly depth.
 - B Length of mounting arm to suit diameter of shroud assembly.
 - C Shroud sections shall be overlapped midway between shroud support brackets and shall be held in place by self-tapping screws.
 - D This OPSD shall be read in conjunction with OPSD 2453.090.
 - E All dimensions are in millimetres unless otherwise shown.

SECTION A-A

SECTION B-B

ONTARIO PROVINCIAL STANDARD DRAWING		Nov 2016	Rev 1
HIGH MAST LIGHTING POLE			
SHROUD DETAILS			
		OPSD 2453.091	

