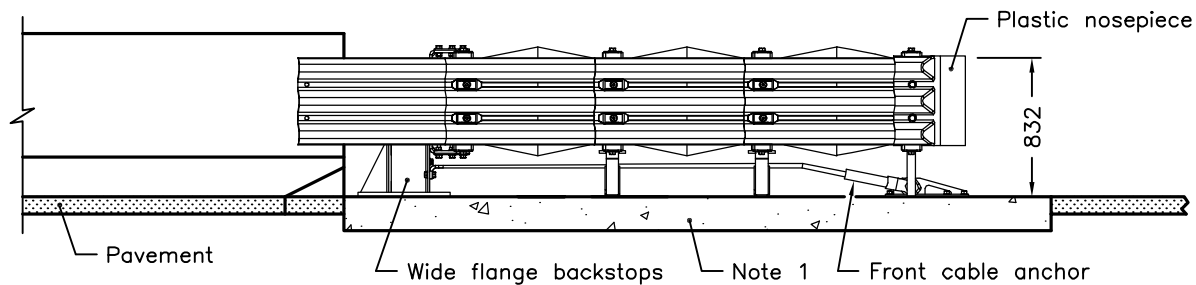


PLAN



ELEVATION

**NOTES:**

- 1 The system shall be anchored to concrete pad detailed in OPSD 923.005.
- 2 2 Type A and 4 Type B cartridges.
- 3 Maximum width of object shall be 2200mm for the first 762mm behind the rear fender panels.
- A Delineation shall be according to OPSD 984.204.
- B Nominal system width is 2290mm.
- C The system depicted here is a proprietary product.
- D System configuration meets NCHRP Report 350 test level.
- E All dimensions are in millimetres unless otherwise shown.

ONTARIO PROVINCIAL STANDARD DRAWING  
**ENERGY ATTENUATOR, CRASH CUSHION  
 TAU-II EXTRA WIDE SYSTEM - TL-2  
 INSTALLATION - PERMANENT  
 UNIDIRECTIONAL**

Nov 2011 Rev 0



**OPSD 923.392**