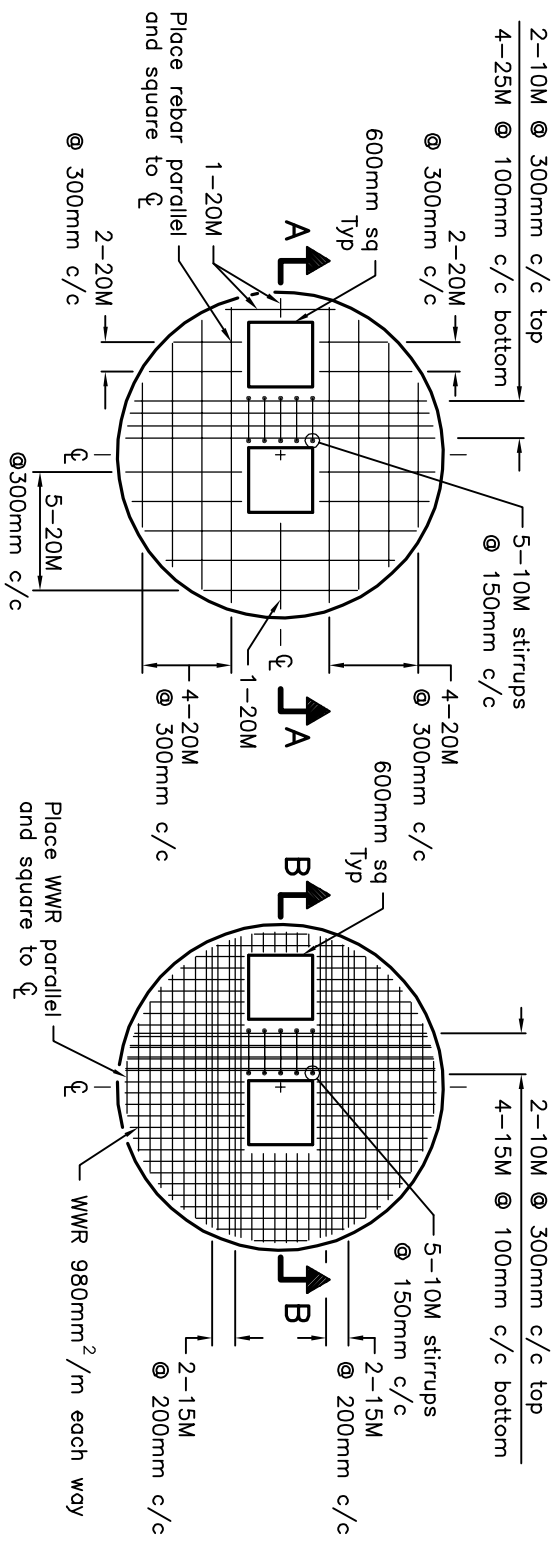
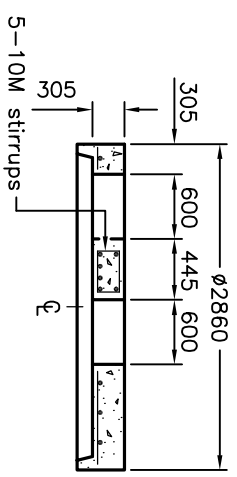


**2400mm DIAMETER
MAINTENANCE HOLE**

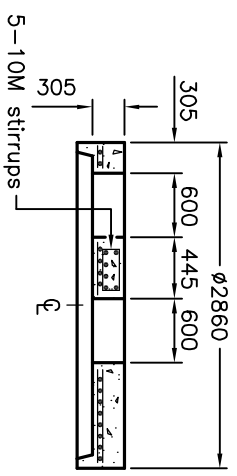


**PLAN OF TWIN INLET FLAT CAP
WITH REINFORCING STEEL BARS**

**PLAN OF TWIN INLET FLAT CAP
WITH WWR**



SECTION A-A



SECTION B-B

Precast units,
OPSD 701.061

- NOTES:**
- A All reinforcing steel shall have 25mm minimum cover.
 - B All dimensions are nominal.
 - C All dimensions are in millimetres unless otherwise shown.

ONTARIO PROVINCIAL STANDARD DRAWING		Nov 2014	Rev	2
PRECAST CONCRETE TWIN INLET FLAT CAP 2400mm DIAMETER		-----		
		OPSD 703.023		

