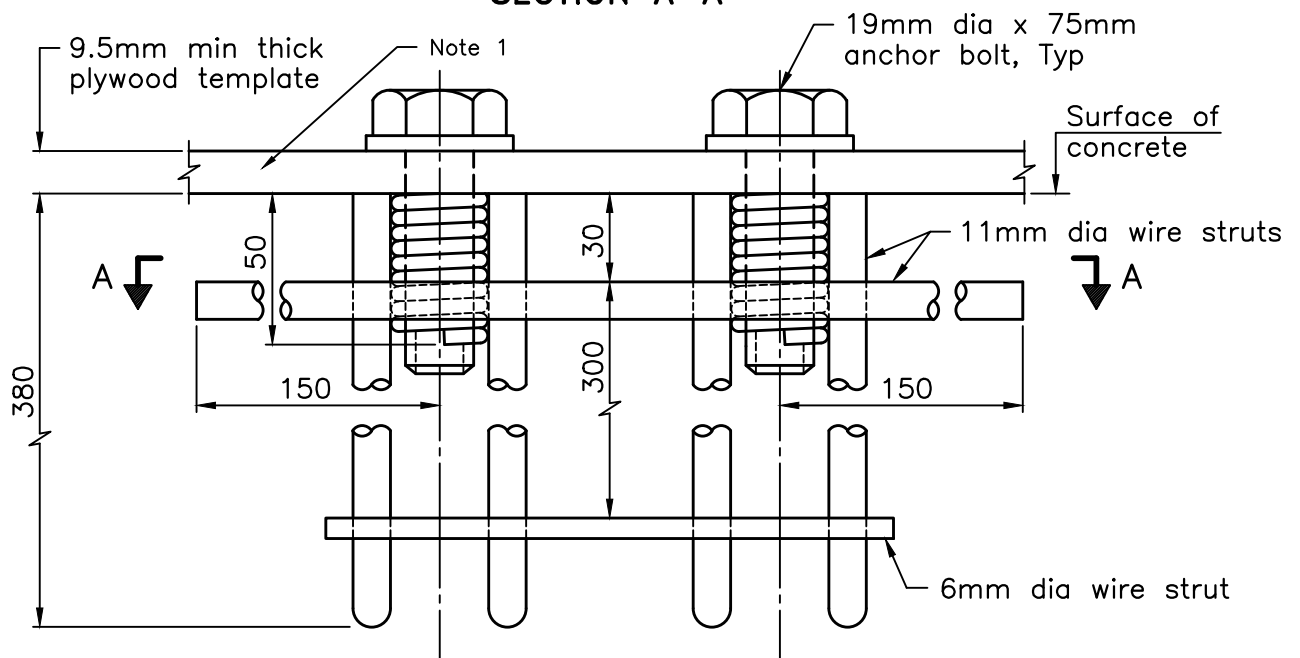


SECTION A-A



ELEVATION

NOTES:

- 1 A plywood setting template shall be provided for accurate positioning of anchorage within the concrete form. Template shall be sized so as to be supported by the formwork. Thickness of template shall not exceed thickness of base plate being installed.
- A Wire struts shall be SAE 1030 steel. Coils shall be SAE 1018 steel.
- B Anchor bolts and hardened steel washers shall be according to ASTM A 325.
- C All welding shall be according to CSA W59.
- D The complete anchorage assembly including bolts, nuts, and washers shall be hot dip galvanized according to CAN/CSA G164M.
- E Bolts shall be given a liberal coating of white non-staining grease.
- F All dimensions are in millimetres unless otherwise shown.

ONTARIO PROVINCIAL STANDARD DRAWING

Nov 2021

Rev 2

BARRIERS AND RAILINGS
STEEL

DOUBLE RAILING ANCHORAGE



OPSD 3419.155