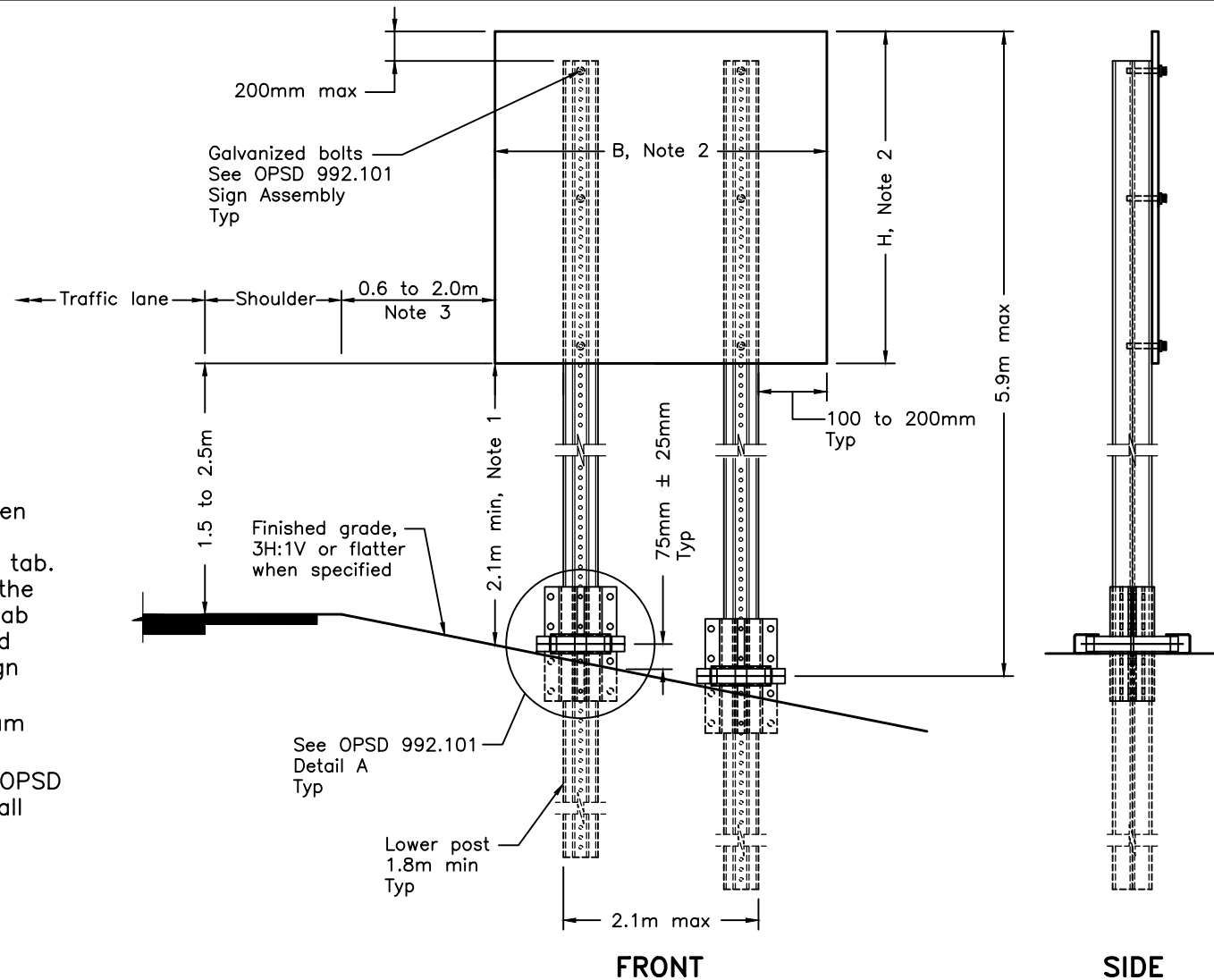



NOTES:

- 1 Minimum vertical clearance of 2.1m shall be provided between the finished grade and the bottom of the lowest sign or tab.
- 2 The maximum dimension for the sign size including any sign tab shall be up to B = 2.4m and H = 3.0m to a maximum sign board area of 7.2m².
- 3 When curb is present, minimum 0.3m from face of curb.
- A The system depicted on this OPSD is a propriety system and shall be installed according to manufacturer's specifications.
- B The post shall be 5.95 kg/m back-to-back creating an 11.9 kg/m section.
- C This OPSD shall be read in conjunction with OPSP 992.101.
- D System configuration meets NCHRP Report 350 TL-3.
- E System configuration meets wind speed loading of 137 km/h.
- F All dimensions are in millimetres unless otherwise shown.



ONTARIO PROVINCIAL STANDARD DRAWING	Nov 2018	Rev 0	
INTERMEDIATE SIGN SUPPORT SYSTEM SLIP-SAFE SUPREME RIB-BAK BREAKAWAY SYSTEM INSTALLATION-DOUBLE POST ASSEMBLY	----- -----		
OPSD 992.210			