

SPLICE BOLT AND NUT
NOTE 2

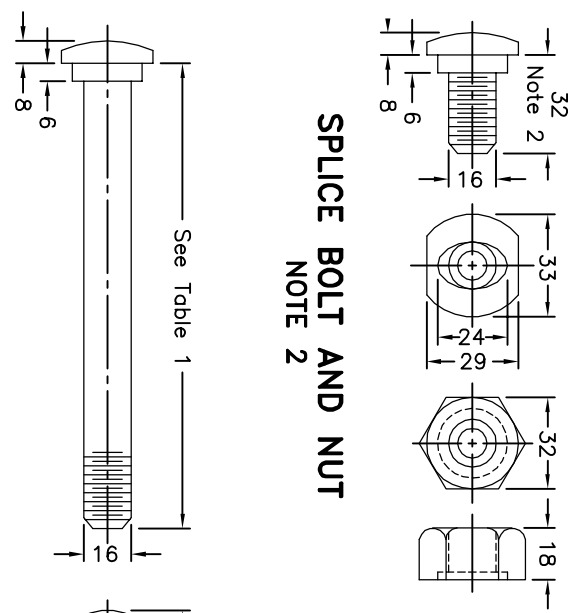
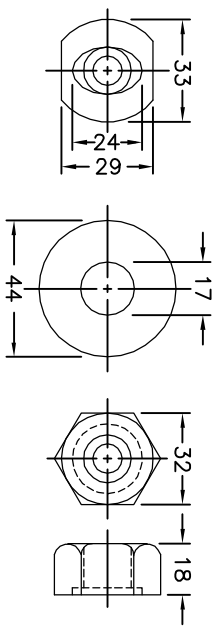


TABLE 1

MOUNTING BOLT LENGTH	
SBGR Type	Length mm
M20 Wood Post	460
M20 Steel Post	250
M30 Wood Post	560
M30 Steel Post	360

MOUNTING BOLT, WASHER, AND NUT



NOTE 1

- NOTES:**
- 1 Base metal thickness of rail shall be 2.67mm nominal and 2.44mm minimum.
 - 2 Splice bolt length shall be 38mm when connecting nested (double) rails.
 - 3 All dimensions subject to manufacturing tolerances unless otherwise indicated.
 - 4 All dimensions are in millimetres unless otherwise shown.

ONTARIO PROVINCIAL STANDARD DRAWING		Apr 2016	Rev 0	
GUIDE RAIL SYSTEM, STEEL BEAM TYPE M RAIL COMPONENT				
		OPSD 912.125		