

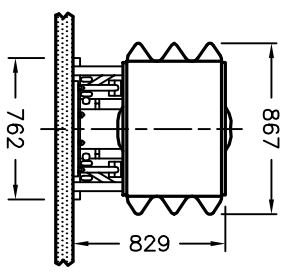
NOTES:

- 1 When system is placed on a concrete pad, the pad shall be according to OPSD 923.001.
- 2 Removable 20mm dia anchor bolts, each with an ultimate pullout strength of 100kN in 30MPa concrete.
- 3 Adjacent temporary concrete barrier shall be modified and anchored according to OPSD 923.002.

- A Delineation shall be according to OPSD 984.203.
- B The system depicted here is a proprietary product.
- C System configuration meets NCHRP Report 350 test level.
- D All dimensions are in millimetres unless otherwise shown.

TABLE 1

SYSTEM CONFIGURATION	TL-2	TL-3
TYPE A CARTRIDGES FRONT REQ'D	1	3
TYPE B CARTRIDGES REAR REQ'D	3	5
SYSTEM LENGTH	3780	7250



SECTION A-A

ONTARIO PROVINCIAL STANDARD DRAWING
ENERGY ATTENUATOR, CRASH CUSHION
TAU-II SYSTEM
INSTALLATION - TEMPORARY
BIDIRECTIONAL

Nov 2011 Rev 1



OPSD 923.381