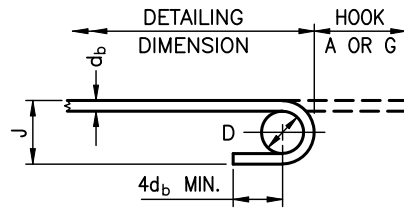


STANDARD 90° HOOK



STANDARD 180° HOOK

MINIMUM BENDING PIN DIAMETER, D, mm

BAR SIZE	STEEL GRADE	
	400R ⁽²⁾	400W
10M	70	60
15M	100	90
20M	120	100
25M	150	150
30M	250	200
35M	300	250
45M	450 ⁽¹⁾	400
55M	600 ⁽¹⁾	550

- (1) Special fabrication is required for bends exceeding 90° for bars of these sizes and grade.
- (2) For stainless steel, with $F_y = 500$, use the same D as for 400R.

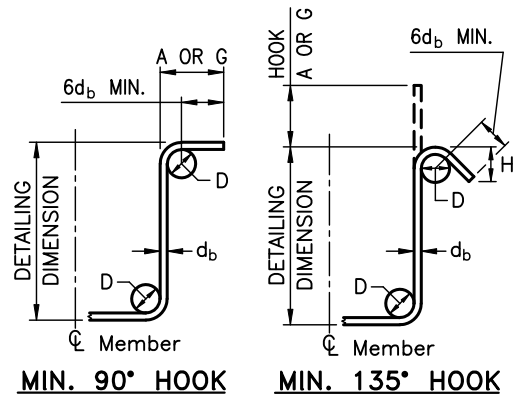
STANDARD HOOK DIMENSIONS

BAR SIZE	90° HOOKS		180° HOOKS			
	A OR G (mm)		A OR G (mm)		J (mm)	
	400R	400W	400R	400W	400R	400W
10M	180	180	140	130	90	80
15M	260	250	180	170	130	120
20M	310	300	220	200	160	140
25M	400	400	280	280	200	200
30M	510	490	400	350	310	260
35M	610	590	480	430	370	320
45M	790	770	680	630	540	490
55M	1030	1010	900	850	710	660

NOTE: All Hook Dimensions are according to the CHBDC-2000.

MINIMUM STIRRUP AND TIE HOOK DIMENSIONS

BAR SIZE	BAR DIAM. d_b (mm)	PIN DIAM. D(mm)	90°	135°	
			A OR G (mm)	A OR G (mm)	H (approx.) (mm)
10M	11.3	45	100	100	70
15M	16.0	65	140	140	100
20M	19.5	80	180	175	115
25M	25.2	100	230		



MIN. 90° HOOK

MIN. 135° HOOK

**HOOK DIMENSIONS
FOR REINFORCING STEEL BARS**

Date Oct. 2013 Rev

SS12-1