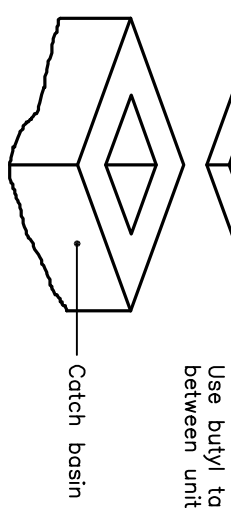
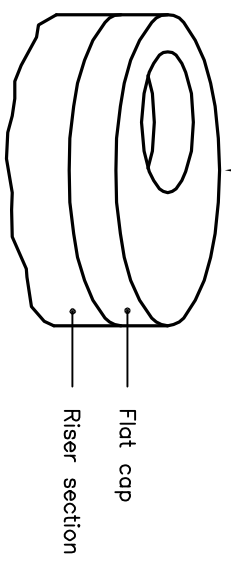
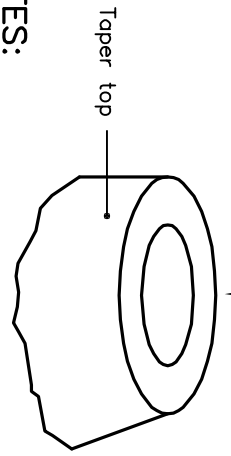


Maintenance hole step Note 1

Reinforce each adjustment unit with a minimum of 1 wire with an end area of at least 15mm². Lap wire 150mm or butt weld. Note 2, Typ

Adjustment units for maintenance holes with round openings. Available in sections or continuous units. Use butyl tape between units.

Adjustment units for catch basins with square openings. Available in sections or continuous units. Use butyl tape between units.



NOTES:

- 1 If first step is in an adjustment unit, the adjustment unit shall be of the type manufactured with a step in place.
- 2 Centre reinforcing in adjustment unit ±10mm.
- 3 Round and square adjustment units are available in sizes of 50, 75, 100, 150, and 300mm.

A Adjustment units shall not extend beyond the outside edge of the structure.
 B All dimensions are in millimetres unless otherwise shown.

ONTARIO PROVINCIAL STANDARD DRAWING		Nov 2014	Rev 3
PRECAST CONCRETE ADJUSTMENT UNITS FOR MAINTENANCE HOLES, CATCH BASINS, AND VALVE CHAMBERS		OPSD 704.010	

