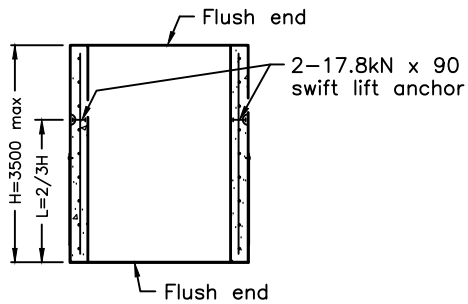
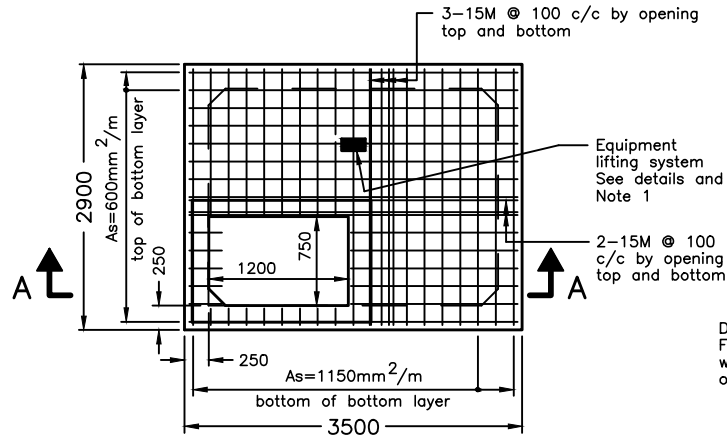


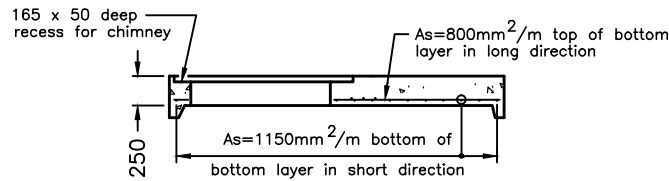
PLAN



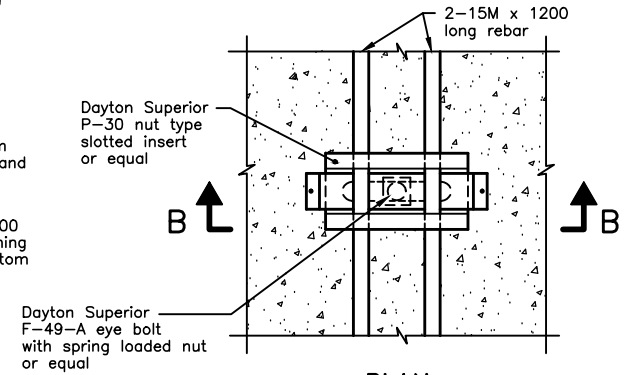
ELEVATION CHIMNEY



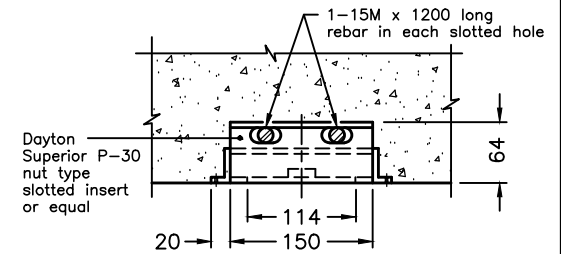
PLAN OF CAP



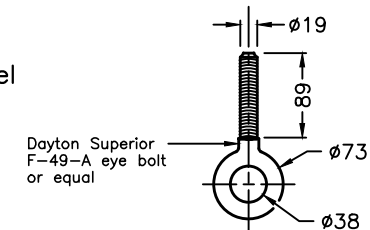
SECTION A-A



PLAN



SECTION B-B



EQUIPMENT LIFTING SYSTEM

NOTES:

- 1 Equipment lifting system shall be installed on underside of precast concrete cap, when required.
- A Precast concrete strength shall be 40MPa.
- B Reinforcing steel shall be according to CSA G30.18, Grade 400W. Inside diameter of bends shall equal six bar diameters. Additional reinforcing shall be rebar Grade 400W.
- C Main reinforcing shall be welded wire fabric, $f_y=500\text{Mpa}$, according to ASTM A497M. Minimum bend shall be six bar or four wire diameters.
- D Clear cover to reinforcing steel in precast shall be a minimum of 40mm and a maximum of 50mm.
- E This OPSD shall be read in conjunction with OPSD 1101.016, 1101.017, and 1101.018.
- F All dimensions are nominal.
- G All dimensions are in millimetres unless otherwise shown.

LEGEND:

As means Area of Steel

ONTARIO PROVINCIAL STANDARD DRAWING PRECAST CONCRETE VALVE CHAMBER WITH POURED-IN-PLACE THRUST BLOCKS 2400 x 3000mm CHIMNEY AND CAP	Nov 2018 Rev 3	
OPSD 1101.019		