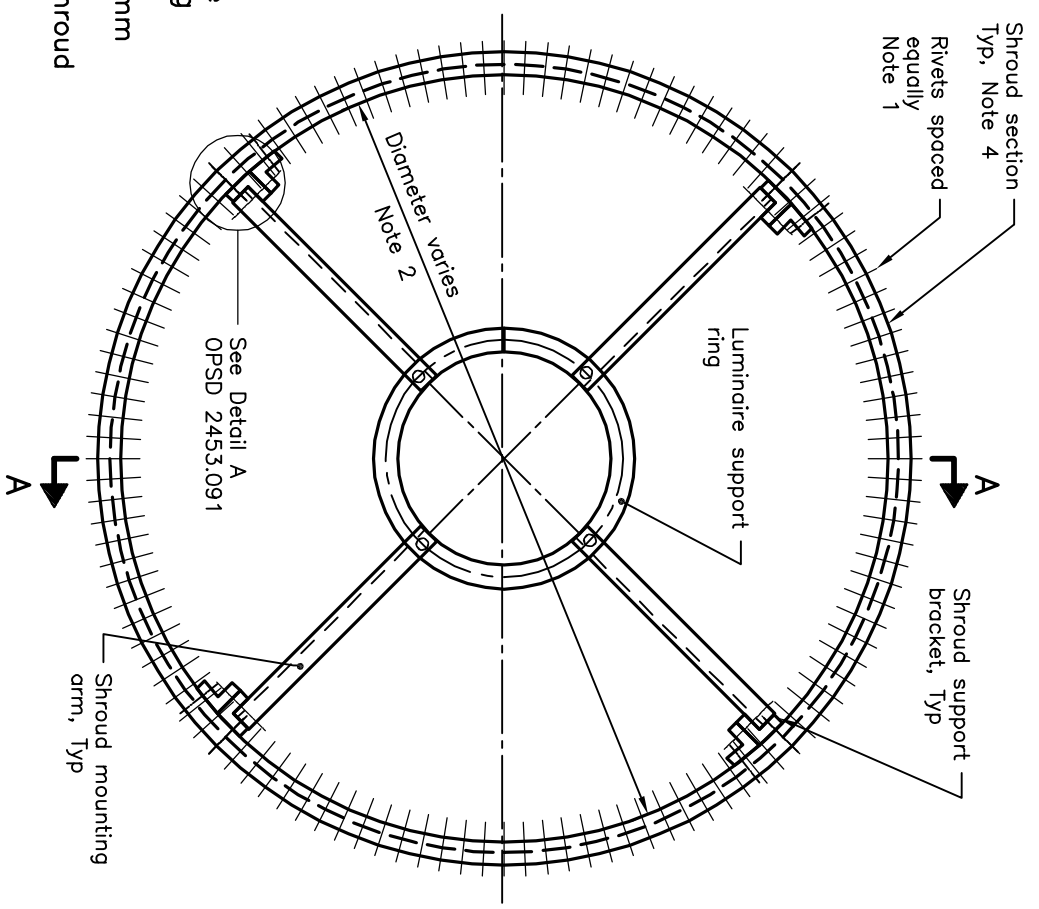


SECTION A-A

NOTES:

- 1 Shroud sections shall be riveted to shroud stiffeners at intervals of no more than 3 degrees.
 - 2 Shroud diameter to suit maximum number of luminaires and luminaire size mounted on each lowering ring assembly.
 - 3 Shroud section depth shall be 600mm or greater.
 - 4 Diameter of shroud sections and shroud stiffeners to suit diameter of shroud assembly.
- A All dimensions are in millimetres unless otherwise shown.



**PLAN
SHROUD ASSEMBLY**

ONTARIO PROVINCIAL STANDARD DRAWING

Nov 2016 Rev 1

HIGH MAST LIGHTING POLE

SHROUD

OPSD 2453.090

