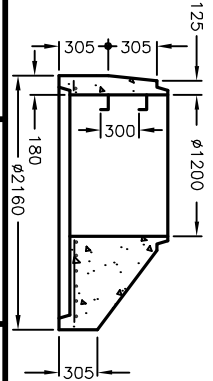
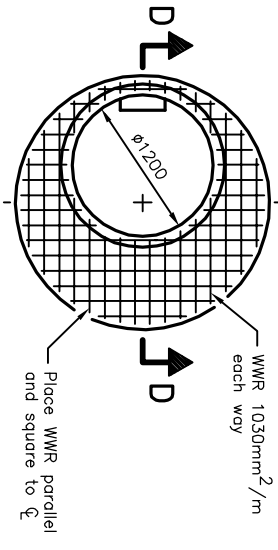
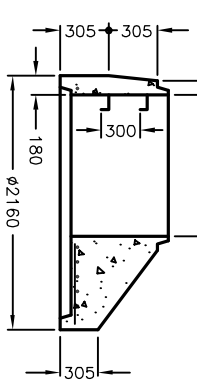
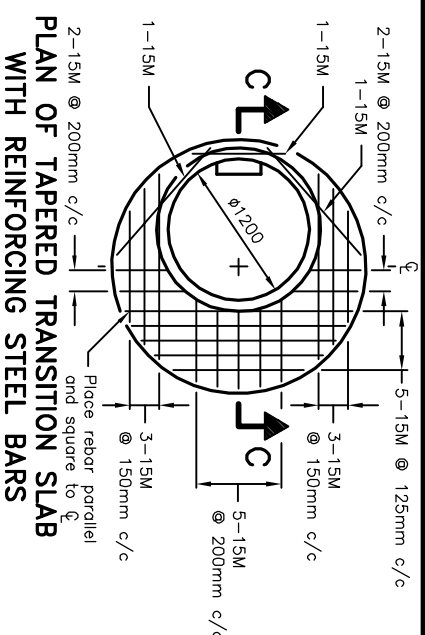
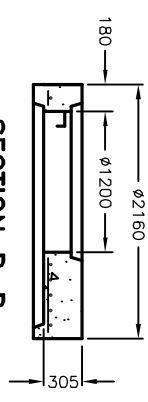
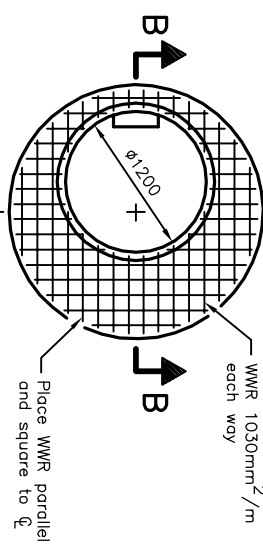
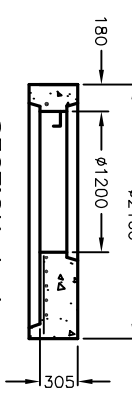
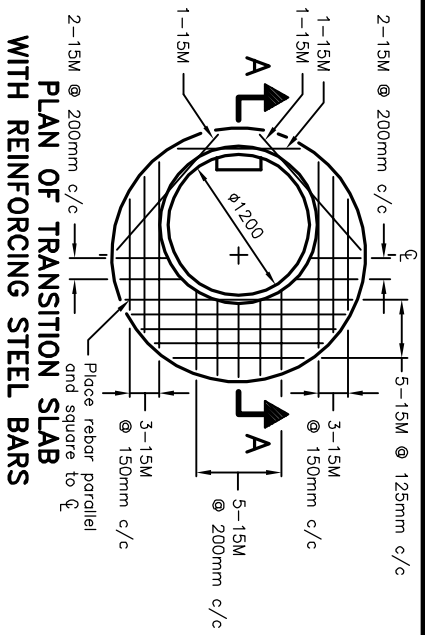


**1800 to 1200mm DIAMETER MAINTENANCE HOLE**

**NOTES:**

- A This OPSPD shall be read in conjunction with OPSPD 701.051.
- B All reinforcing steel shall have 25mm minimum cover.
- C Steps shall be according to OPSPD 405.010 or 405.020.
- D All dimensions are nominal.
- E All dimensions are in millimetres unless otherwise shown.



<b>ONTARIO PROVINCIAL STANDARD DRAWING</b>		<b>NOV 2014</b>	<b>REV 4</b>
<b>PRECAST CONCRETE MAINTENANCE HOLE COMPONENTS</b>			
<b>1800mm DIAMETER TRANSITION SLABS</b>			
<b>OPSPD 701.050</b>			

