

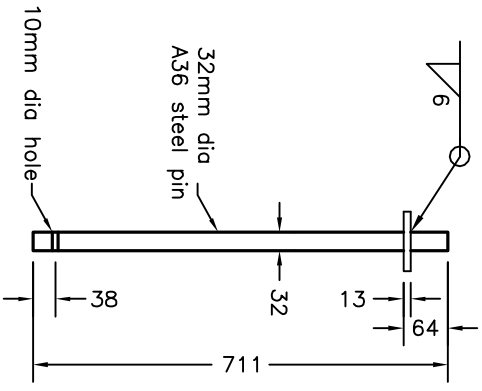
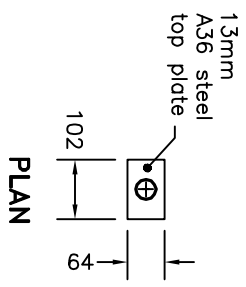
**CONNECTION DETAIL**

**NOTES:**

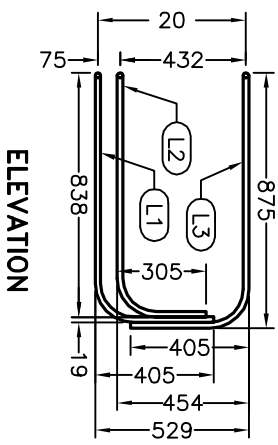
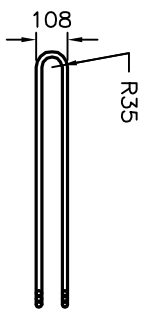
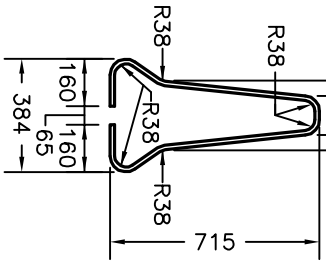
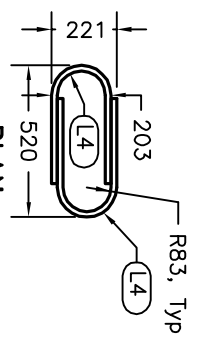
- 1 Minimum tensile elongation of test specimen shall be greater than 14%.
- 2 Imperial size 3/4 inch diameter Grade 60 ASTM A706 smooth reinforcing steel bars are acceptable.
- 3 Slack shall be removed from joint after pin installation. Minimum horizontal radius shall be 26m.

A Welding of connection pin and plate shall be according to CSA W59.

B All dimensions are in millimetres unless otherwise shown.



**CONNECTION PIN**



BAR	SIZE	GRADE	TYPE	LENGTH	SHAPE	NO. REQ'D
H1	15M	400W	Deformed	3708	3708	5
L1, Note 1 and 2	20M	400W	Deformed	2570	405 857	2
L2, Note 1 and 2	20M	400W	Deformed	2310	305 838	2
L3, Note 1 and 2	20M	400W	Deformed	2600	405 875	2
L4	20M	400W	Deformed	889	203 406	6
V1	15M	400W	Deformed	1791	Λ	12

**ONTARIO PROVINCIAL STANDARD DRAWING**

**GUIDE RAIL SYSTEM, CONCRETE BARRIER**

**TYPE M CONNECTION**

**INSTALLATION—TEMPORARY 2**

Nov 2013 Rev 0

**OPSD 911.161**

