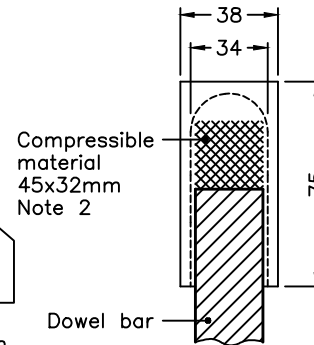
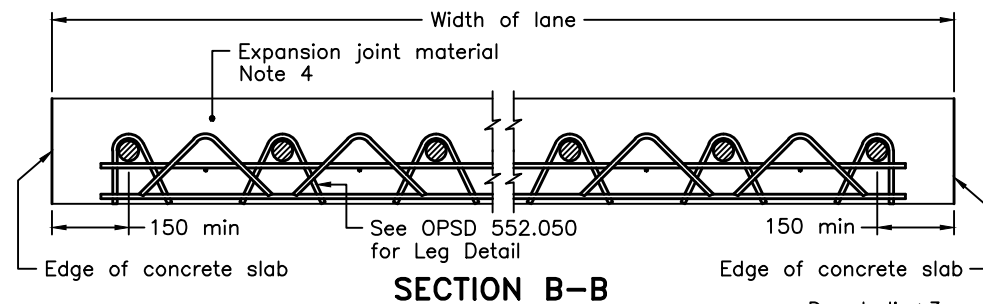
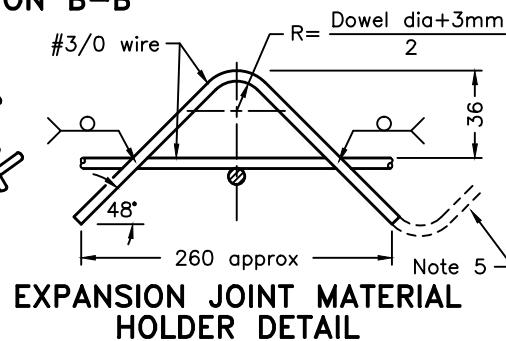
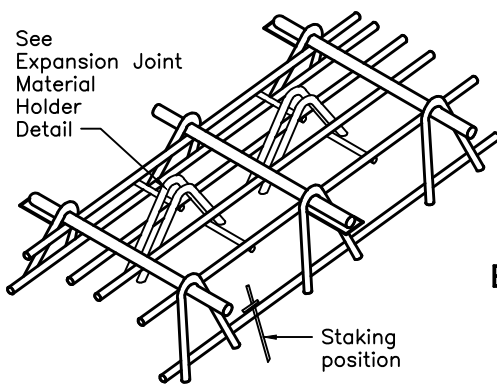



NOTES:

- 1 A minimum of 3 stakes shall be uniformly spaced per side per lane.
- 2 The compressible cap material shall be a non-absorptive, closed cell polyethylene foam.
- 3 The expansion joint material shall be machined punched with 35mm diameter holes to accommodate the dowels.
- 4 Expansion joint material to extend for the full width of the concrete slab.
- 5 Expansion joint material holder may be continuous or broken as shown.
- 6 Arc or resistance spot weld, alternate ends of adjacent dowels only, top or bottom of dowel bar.



- A At bridge approaches the skew of the device shall match the approach slab skew.
- B Load transfer device shall be shop coated with RC-250, Tectyl 506, or Protec 6116-DS Amber.
- C Load transfer devices not required in shoulders or gore areas, however, expansion joint material shall extend through the shoulder, gore areas, and curb and gutter to edge of concrete slab.
- D All dimensions are in millimetres unless otherwise shown.



ONTARIO PROVINCIAL STANDARD DRAWING	Nov 2017	Rev 3	
LOAD TRANSFER DEVICE SKEWED EXPANSION JOINT CONCRETE OR COMPOSITE PAVEMENT			
OPSD 552.060			