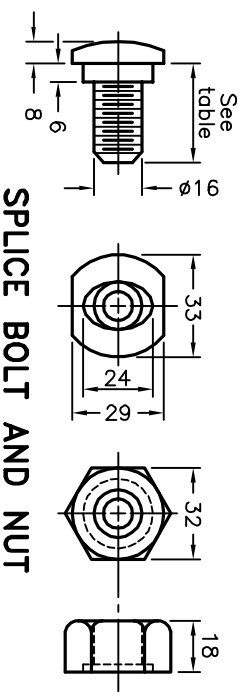


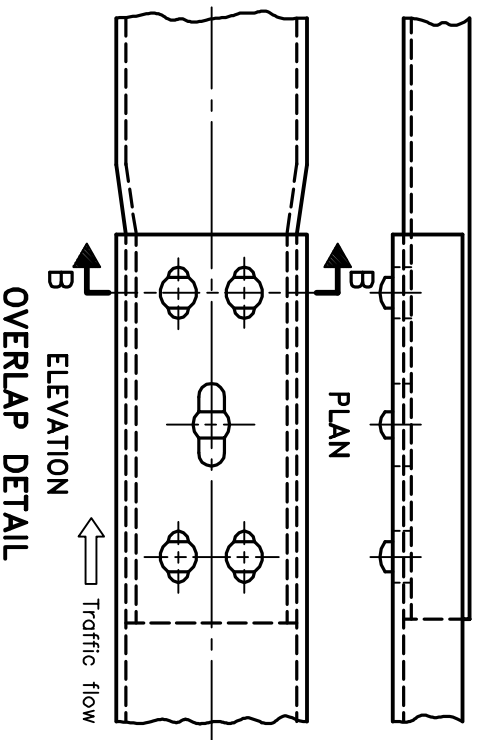
**ELEVATION**

**SECTION A-A**

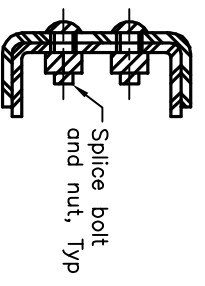


**SPLICE BOLT AND NUT**

| SPLICE BOLT LENGTH | LENGTH |
|--------------------|--------|
| At posts           | 32     |
| At structures      | 64     |



**OVERLAP DETAIL**



**SECTION B-B**

**NOTES:**

- 1 Base metal thickness of channel shall be 4.0mm nominal and 3.8mm minimum.
- A All dimensions are in millimetres unless otherwise shown.

|  |  |          |       |
|--|--|----------|-------|
| ONTARIO PROVINCIAL STANDARD DRAWING                    |  | Nov 2016 | Rev 2 |
| <b>GUIDE RAIL SYSTEM, STEEL BEAM CHANNEL COMPONENT</b> |  |          |       |
| OPSD 912.102   |  |          |       |