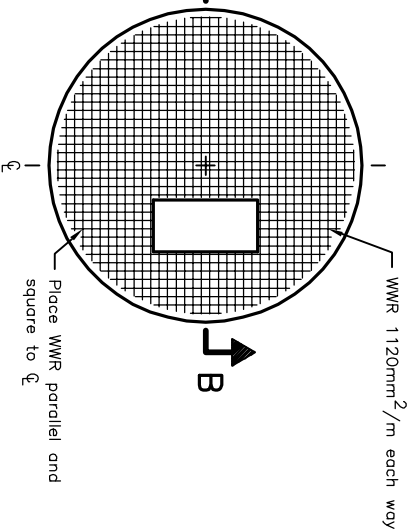


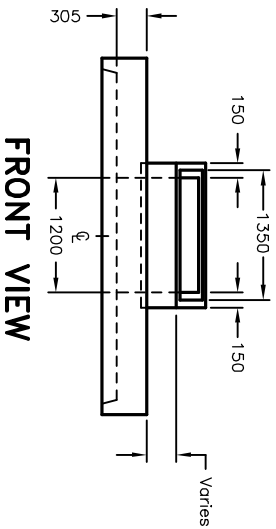
A B



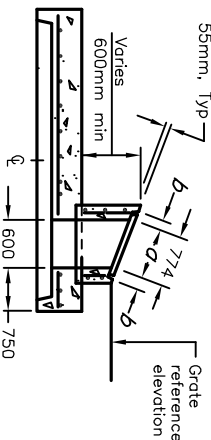
TYPE A DITCH INLET

PLAN OF FLAT CAP WITH REINFORCING STEEL BARS

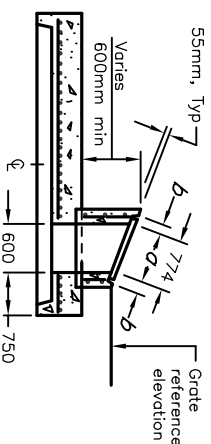
PLAN OF FLAT CAP WITH WWR



FRONT VIEW



SECTION A-A



SECTION B-B

NOTES:

- A Where inlet is placed across ditch and is accessible to vehicular traffic, grating slope shall be 6H:1V or flatter.
- B All reinforcing steel shall have 25mm minimum cover.
- C Grating shall be according to OPSD 403.010.
- D All dimensions are nominal.
- E All dimensions are in millimetres unless otherwise shown.

Opening Dimensions		
Grate Type	Slope	
B	2H:1V	670
	3H:1V	632
	4H:1V	618
	Horizontal	600
		87

ONTARIO PROVINCIAL STANDARD DRAWING

PRECAST CONCRETE DITCH INLET - TYPE A

600X1200mm

WITH 3000mm DIAMETER FLAT CAP

Nov 2014

Rev 3



OPSD 706.040