

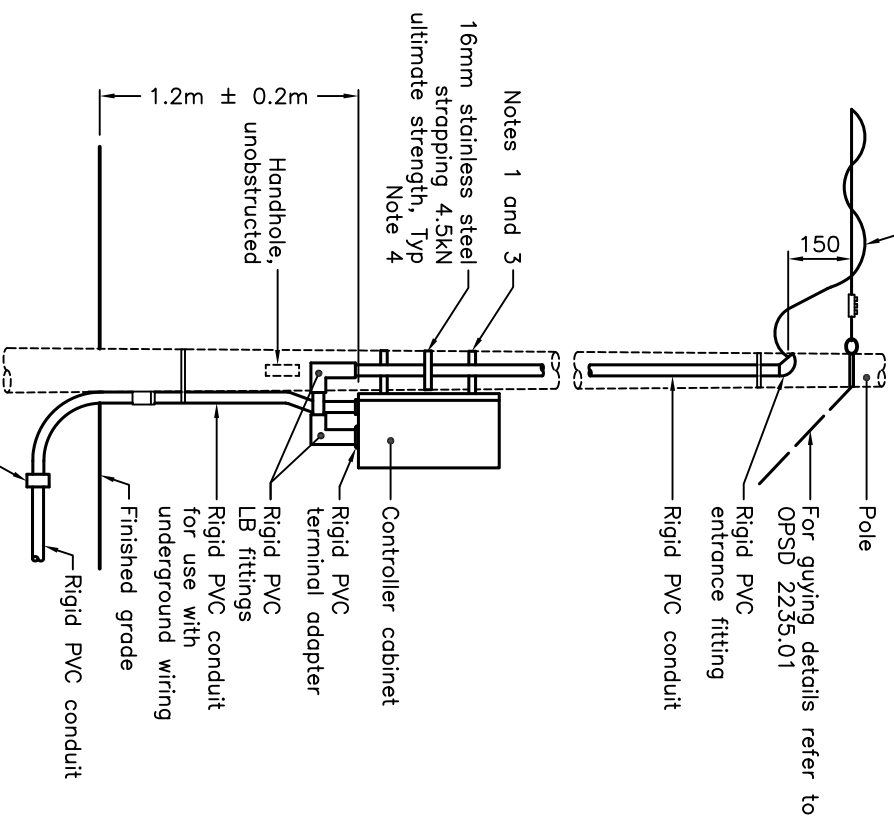
UNDERGROUND WIRING INSTALLATIONS

NOTES:

- 1 For controller cabinet bracket mounting details refer to OPSD 2510.020.
- 2 When controller cabinet mounted on metal pole, system ground shall not be connected to pole ground terminal.
- 3 Stainless steel strapping shall not be used as the sole support for electrical equipment installed on wooden poles.
- 4 Spacing shall be as specified in the Ontario Electrical Safety Code or the manufacturer's instructions.

- A For location and types of poles and orientation and location of controller cabinet refer to the layout drawings.
- B All dimensions are in millimetres unless otherwise shown.

For aerial installation refer to OPSD 2540.01



OVERHEAD WIRING INSTALLATIONS

ONTARIO PROVINCIAL STANDARD DRAWING

**POLE MOUNTED
CONTROLLER CABINET**

Nov 2012 Rev 0

OPSD 2510.010

