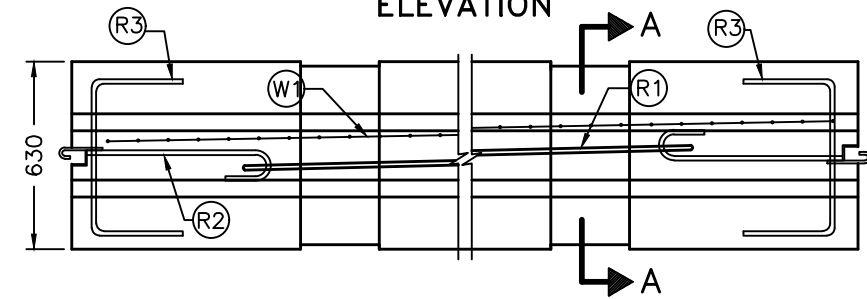
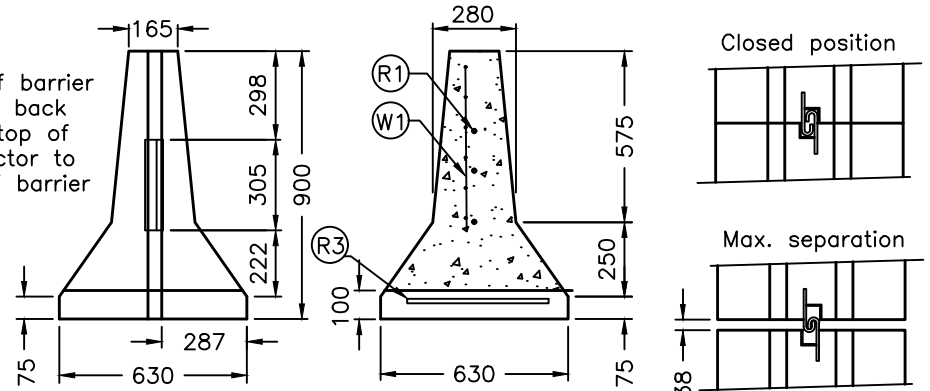


ELEVATION

End of barrier sloped back from top of connector to top of barrier

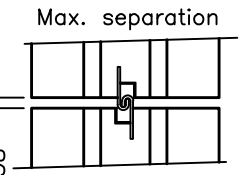
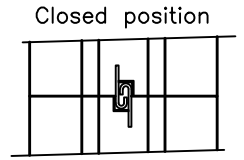


PLAN

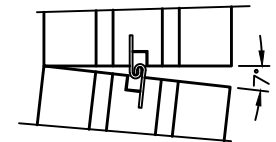


END ELEVATION

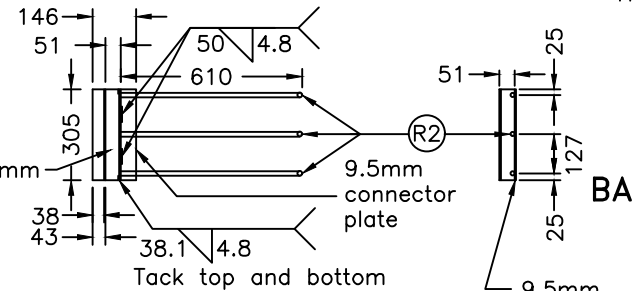
SECTION A-A



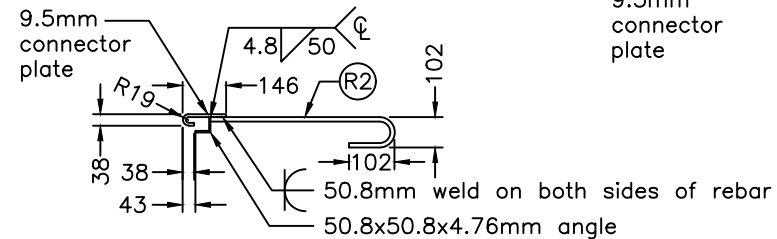
Horizontal rotation, Note 1



BARRIER TO BARRIER CONNECTION



Tack top and bottom



DETAIL

Type J Connection

REINFORCING STEEL BARS							
BAR	SIZE	GRADE	TYPE	LENGTH	SHAPE	NO. REQ'D	
R1	15M	400W	Deformed	3200		3	
R2	15M	400W	Deformed	814		6	
R3	10M	400W	Deformed	1080		2	
W1	152X152 MW18.7XMW18.7 (456X3810)						

NOTES:

- 1 Temporary concrete barriers manufactured prior to September 2009 with one 600mm long x 100mm high opening are acceptable.
- A Minimum horizontal radius shall be 31m.
- B The system depicted here is a proprietary product.
- C System configuration meets NCHRP Report 350 TL-3.
- D Concrete cover shall be 50mm minimum.

- E All concrete edges shall have 15 x 45° chamfers.
- F Welds shall be according to CSA W59.
- G All dimensions are in millimetres unless otherwise shown.

ONTARIO PROVINCIAL STANDARD DRAWING		Nov 2021	Rev	1
GUIDE RAIL SYSTEM, CONCRETE BARRIER TYPE J CONNECTION, 4m LENGTH INSTALLATION – TEMPORARY				
OPSD 911.150				

