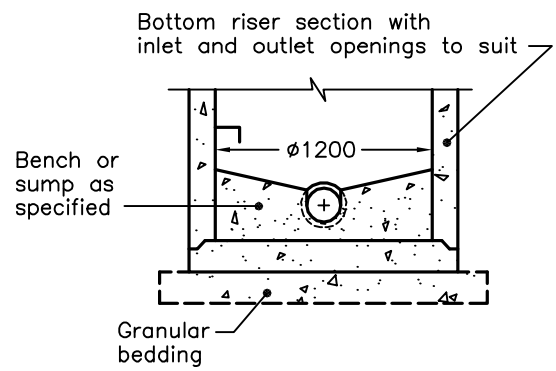
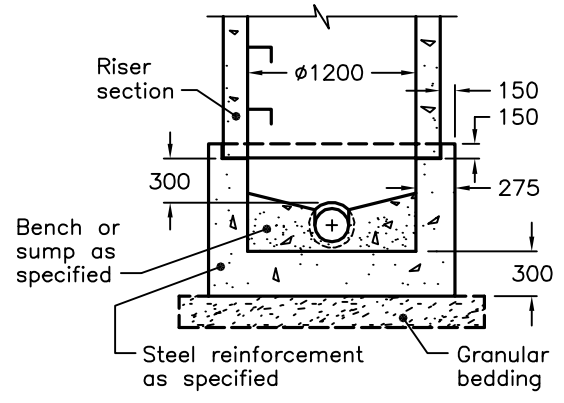


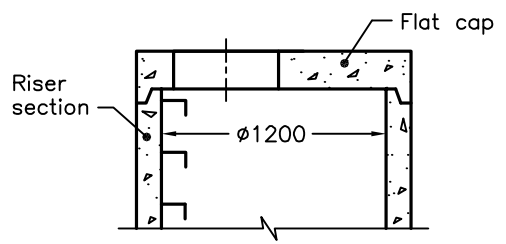
**ALTERNATIVES**



**A PRECAST SLAB BASE**



**B CAST-IN-PLACE BASE**



**C PRECAST FLAT CAP**

- NOTES:**
- 1 The sump is measured from the lowest invert.
  - A Granular backfill shall be placed to a minimum thickness of 300mm all around the maintenance hole.
  - B Precast concrete components shall be according to OPSD 701.030, 701.031, or 701.032.
  - C Structure exceeding 5.0m in depth shall include safety platform according to OPSD 404.020.
  - D Pipe support according to OPSD 708.020.
  - E For benching and pipe opening details, see OPSD 701.021.
  - F For adjustment unit and frame installation, see OPSD 704.010.
  - G All dimensions are nominal.
  - H All dimensions are in millimetres unless otherwise shown.

ONTARIO PROVINCIAL STANDARD DRAWING

**PRECAST CONCRETE  
MAINTENANCE HOLE  
1200mm DIAMETER**

Nov 2014 | Rev 5



**OPSD 701.010**