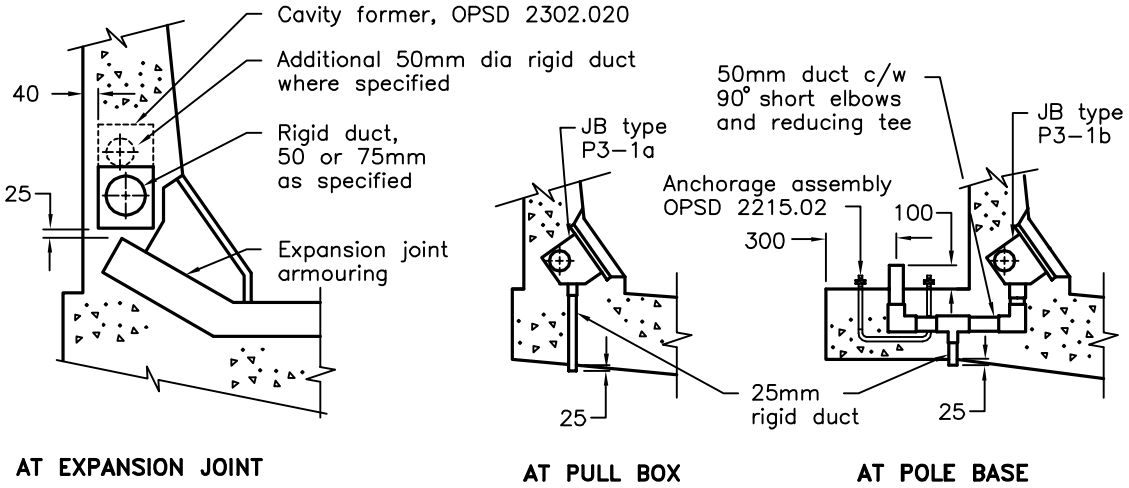
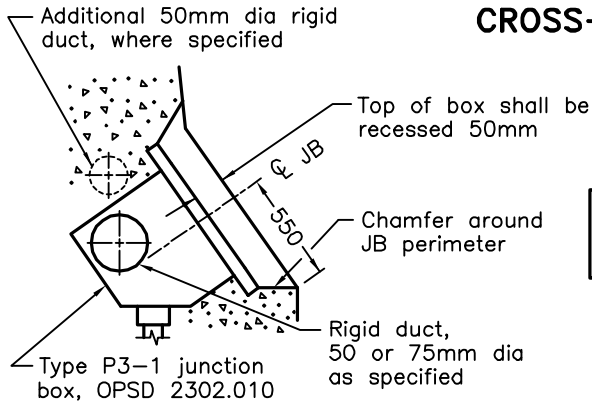


**ELEVATION**



**CROSS-SECTION DETAILS**



**JUNCTION BOX INSTALLATION DETAIL**

**DRILL-HOLE SIZE AND LOCATION**

JUNCTION BOX TYPE	DRILL-HOLE DIA			
	I	II	III	IV
P3-1a	*	*	33	-
P3-1b	*	*	60	-

\* For 50mm duct drill-hole dia = 60mm  
For 75mm duct drill-hole dia = 88mm

**JUNCTION BOX - DUCT ENTRY SIZES AND LOCATIONS**

**NOTES:**

- 1 Embedded rigid duct shall be terminated at wing wall with O ring expansion joint coupling, 195mm long, for 50mm dia duct and with regular coupling for 75mm dia duct.
- 2 When the 50mm dia duct is installed in addition to the 75 or 50mm dia duct, junction boxes shall not be installed in the additional 50mm duct.

- A For embedded duct and junction box requirements, refer to Contract Drawings.
- B All dimensions are in millimetres unless otherwise shown.

ONTARIO PROVINCIAL STANDARD DRAWING	Nov 2013	Rev 1	
<b>EMBEDDED WORK IN STRUCTURE</b>	-----		
NEW JERSEY TYPE CONCRETE BARRIER WALL	<b>OPSD 2302.040</b>		