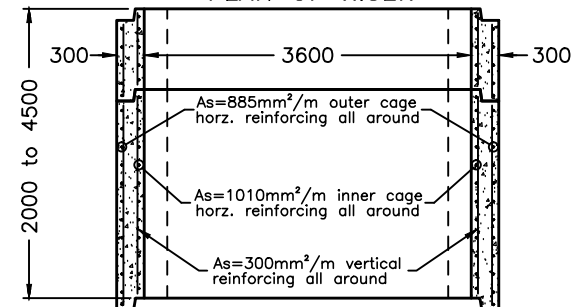
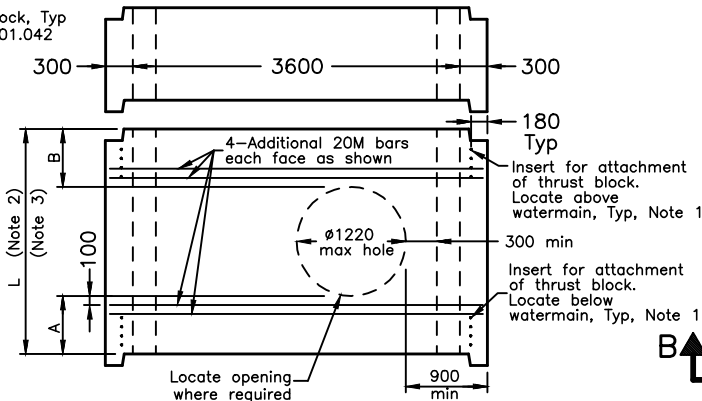


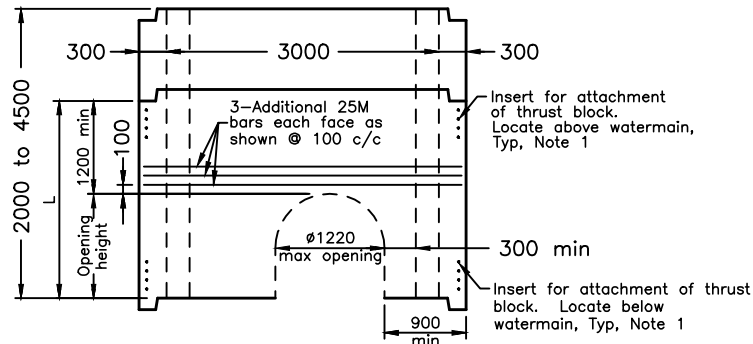
PLAN OF RISER



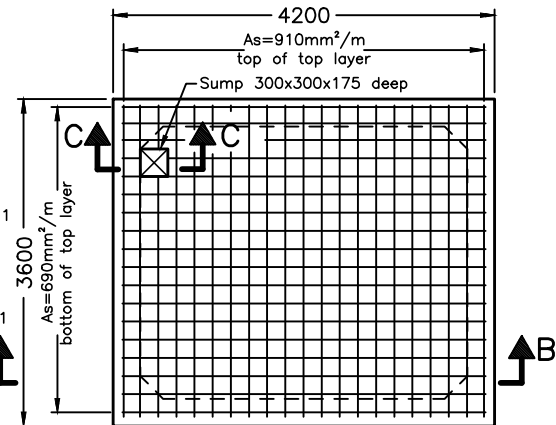
SECTION A-A



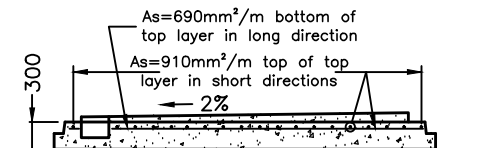
VIEW OF SIDES WITH CIRCULAR OPENING



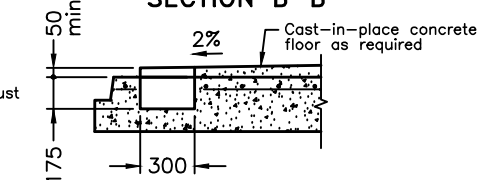
VIEW OF SIDES WITH SLOTTED OPENING



PLAN OF BASE



SECTION B-B



SECTION C-C

NOTES:

- 1 Threaded inserts for the attachment of thrust blocks shall be 15M equivalent and Dayton Superior DBR system or equal with strength of 125% of yield strength of coupled rebar. For location and number of inserts see OPSD 1101.042.
- 2 If no opening in a single riser, the height of that riser may be 2000 to 4500mm.
- 3 A+B shall be a minimum of L/2 or 1200mm.

- A Reinforcing steel shall be according to CSA G30.18, Grade 400W. Inside diameter of bends shall equal six bar diameters. Additional reinforcing shall be rebar Grade 400W.
- B Main reinforcing shall be welded wire fabric, $f_y=500\text{MPa}$, according to ASTM A497M. Minimum bend shall be six bar or four wire diameters.
- C Precast concrete strength shall be 40MPa.
- D Clear cover to reinforcing in precast shall be a minimum of 40mm and a maximum of 50mm.
- E This OPSD shall be read in conjunction with OPSD 1101.040, 1101.042, and 1101.043.
- F All dimensions are nominal.
- G All dimensions are in millimetres unless otherwise shown.

LEGEND:

As means Area of Steel

ONTARIO PROVINCIAL STANDARD DRAWING

**PRECAST CONCRETE VALVE CHAMBER
WITH POURED-IN-PLACE THRUST BLOCKS**
3600 x 3000mm
RISER AND BASE

Nov 2018

Rev 1



OPSD 1101.041