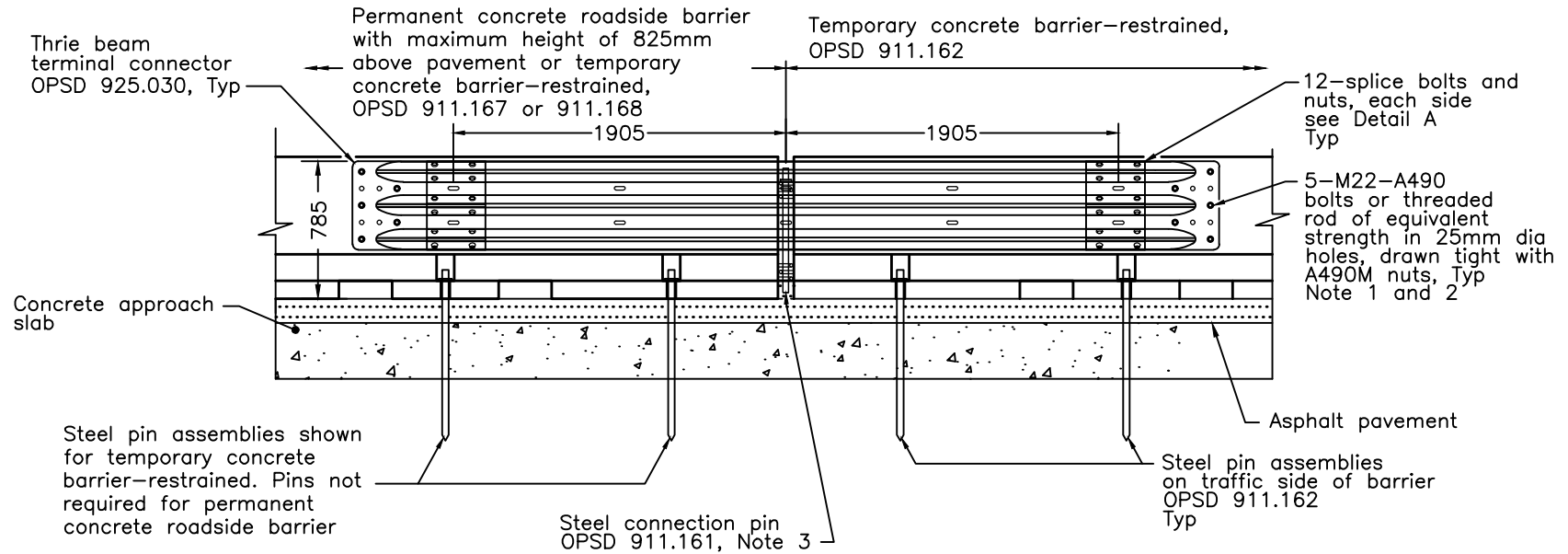
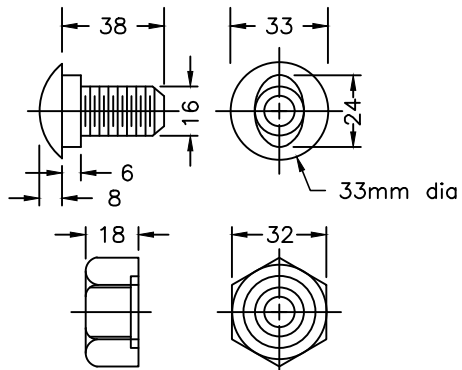


PLAN Traffic flow



ELEVATION




SPLICE BOLT AND NUT
DETAIL A

NOTES:

- 1 Alternative Hilti HIT HY200 with 22mm diameter HAS-E rods or equivalent, 95mm minimum embedment.
 - 2 Exposed bolt or threaded rod end saw-cut flush with face of nut.
 - 3 Steel connection pin not required with permanent concrete barrier.
- A This OPSD shall be read in conjunction with OPSD 911.160.
 B System configuration meets NCHRP Report 350 TL-3.
 C All dimensions are in millimetres unless otherwise shown.

ONTARIO PROVINCIAL STANDARD DRAWING		Nov 2021	Rev	2
GUIDE RAIL SYSTEM, CONCRETE BARRIER TYPE M CONNECTION COMPONENT - THRIE BEAM TRANSITION		-----		

				
		OPSD 911.174		